

ILS or LOC RWY 6 BRADLEY INTL (BDL)

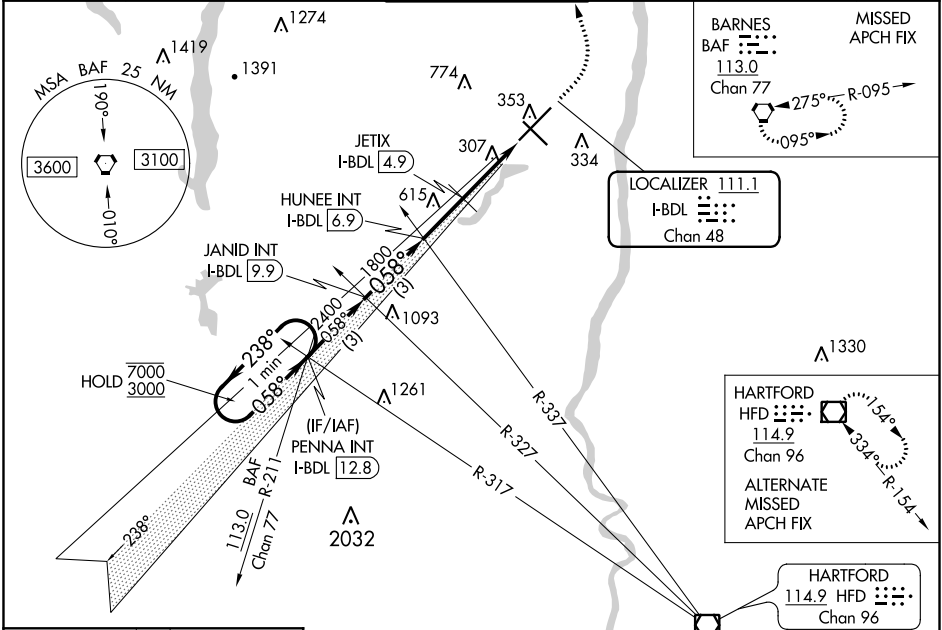
LOC/DME I-BDL 111.1 Chan 48	APP CRS 058°	Rwy Idg TDZE Apt Elev	9509 173 173
---	------------------------	-----------------------------	---

RADAR required for procedure entry.

ALSF-2

MISSED APPROACH: Climb to 4000 then left turn direct BAF VORTAC and hold.

D-ATIS 118.15	YANKEE APP CON 123.95 290.55 (061°-240°) 125.35 281.5 (241°-060°)	BRADLEY TOWER 120.3 351.8	GND CON 121.9 348.6	CLNC DEL 121.75 322.3	CPDLC
-------------------------	---	-------------------------------------	-------------------------------	---------------------------------	-------



NE-1, 08 SEP 2022 to 06 OCT 2022

NE-1, 08 SEP 2022 to 06 OCT 2022

ELEV 173	D	TDZE 173
----------	----------	----------

FAF to MAP 4.9 NM

Knots	60	90	120	150	180
Min:Sec	4:54	3:16	2:27	1:58	1:38

TDZ/CL Rwy 6 and 24
HIRL Rwy 6-24 and 15-33
REIL Rwy 6 and 15

One Minute Holding Pattern	PENNA INT I-BDL 12.8	JANID INT I-BDL 9.9	HUNEE INT I-BDL 6.9	JETIX I-BDL 4.9	I-BDL 2.9	I-BDL 1.9
7000 ← 238°	3000 ← 058°	2400	1800	1160	1800	1160
GS 3.00°	TCH 54					
3 NM	3 NM	2 NM	2 NM	1 NM		
CATEGORY	A	B	C	D		
S-ILS 6	373/18 200 (200-½)					
S-LOC 6	1160/40 987 (1000-¾)	1160/55 987 (1000-1)	1160-2½	987 (1000-2½)		
JETIX FIX MINIMUMS (DME REQUIRED)						
S-LOC 6	560/24	387 (400-½)	560/35	387 (400-⅝)		