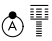


APP CRS	Rwy Idg	9509
058°	TDZE	173
	Apt Elev	173

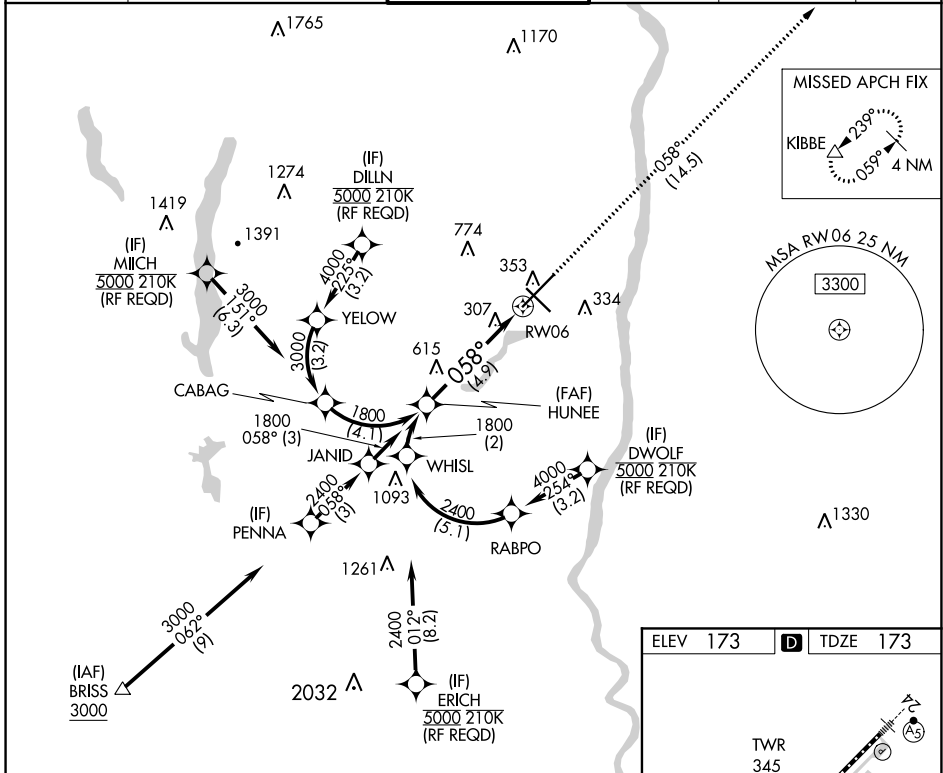
RNAV (RNP) Z RWY 6

BRADLEY INTL (BDL)

For uncompensated Baro-VNAV systems, procedure NA below -18°C (0°F) or above 54°C (130°F). GPS required. For inop ALS, increase RNP 0.11 all Cats visibility to RVR 5500 and RNP 0.30 all Cats visibility to 1 3/8 SM.

ALSF-2  MISSED APPROACH: Climb to 3000 on track 058° to KIBBE and hold.

D-ATIS	YANKEE APP CON	BRADLEY TOWER	GND CON	CLNC DEL	CPDLC
118.15	123.95 290.55 (061°-240°) 125.35 281.5 (241°-060°)	120.3 351.8	121.9 348.6	121.75 322.3	



NE-1, 08 SEP 2022 to 06 OCT 2022

NE-1, 08 SEP 2022 to 06 OCT 2022

VGSI and RNAV glidepath not coincident (VGSI Angle 3.00/TCH 71).

HUNEE 1800

1800

058°

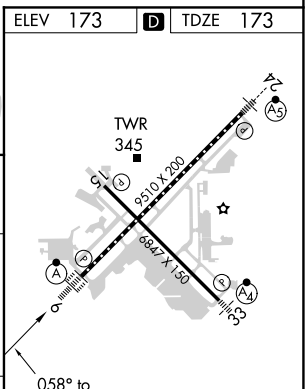
RW06

GP 3.00° TCH 54

See planview for multiple IF locations.

4.9 NM

3000 tr 058° KIBBE



CATEGORY	A	B	C	D
RNP 0.11 DA		545/40	372 (400-3/4)	
RNP 0.30 DA		672/50	499 (500-1)	

AUTHORIZATION REQUIRED

TDZ/CL Rwy 6 and 24
HIRL Rwys 6-24 and 15-33
REIL Rwys 6 and 15