

RNAV 1 - DME/DME/IRU or GPS.

RADAR required.

TOP ALTITUDE:
ASSIGNED BY ATC

ATIS★

132.275 269.9

CLNC DEL

121.75 275.8

GND CON

121.75 275.8

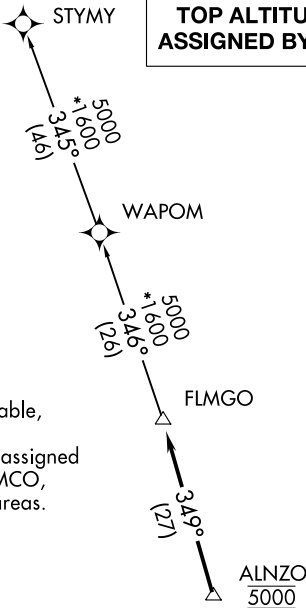
HOMESTEAD TOWER

133.45 279.55

MIAMI DEP CON

125.5 354.1

- NOTE: Jet aircraft only.
- NOTE: Accelerate to 250K, if unable, advise ATC.
- NOTE: WAPOM Transition ATC assigned except aircraft landing: MCO, DAB, and MLB terminal areas.



TAKEOFF MINIMUMS

- Rwy 6: Standard with minimum climb of 500' per NM to 1800.
- Rwy 24: Standard with minimum climb of 500' per NM to 2200.

NOTE: Chart not to scale.

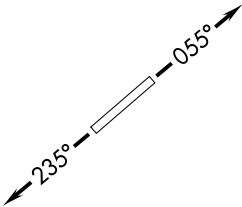


DEPARTURE ROUTE DESCRIPTION

- TAKEOFF RUNWAY 6: Climb on heading 055° or as assigned for RADAR vectors to cross ALNZO at 5000, thence. . . .
- TAKEOFF RUNWAY 24: Climb on heading 235° or as assigned for RADAR vectors to cross ALNZO at 5000, thence. . . .

. . . on track 349° to FLMGO, then on assigned transition. Maintain ATC assigned altitude. Expect filed altitude within 10 minutes after departure.

- STYMY TRANSITION (FLMGO1.STYMY)
- WAPOM TRANSITION (FLMGO1.WAPOM)



SE-3, 08 SEP 2022 to 06 OCT 2022

SE-3, 08 SEP 2022 to 06 OCT 2022