

WAAS CH <b>97425</b> <b>W31A</b>	APP CRS <b>312°</b>	Rwy Idg TDZE Apt Elev	<b>5005</b> <b>264</b> <b>264</b>
--	------------------------	-----------------------------	---

# RNAV (GPS) RWY 31

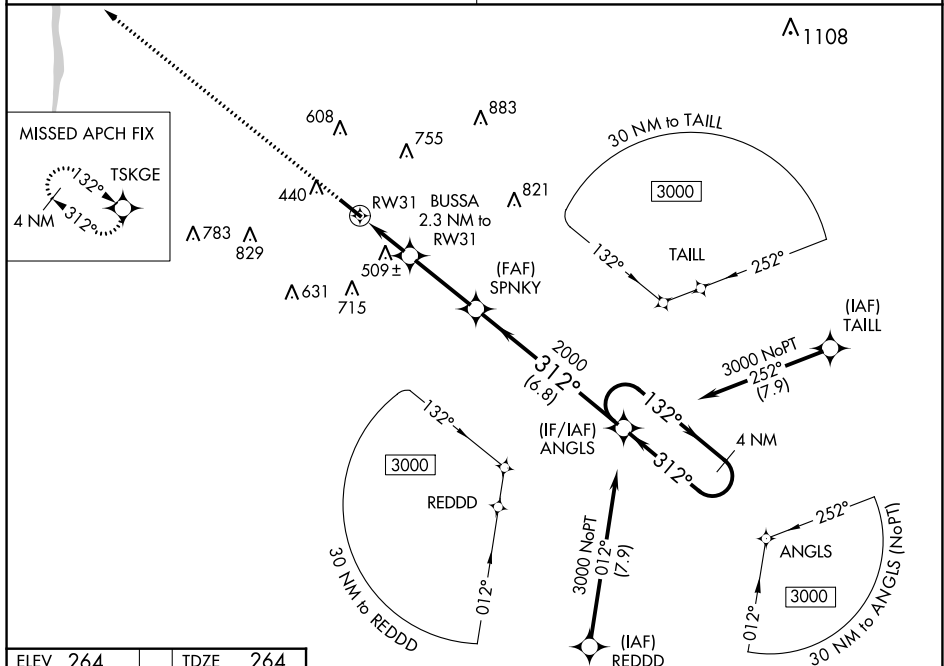
MOTON FLD MUNI (Ø6A)

**⚠** DME/DME RNP-0.3 NA. Helicopter visibility reduction below ¼ SM NA. Baro-VNAV NA.  
**⚠ NA** Use Montgomery altimeter setting when not received use Troy Muni at N Kenneth Campbell Fld altimeter setting; increase all DA 18 feet and all MDA 20 feet, and increase Circling Cat B and C visibility ¼ mile.

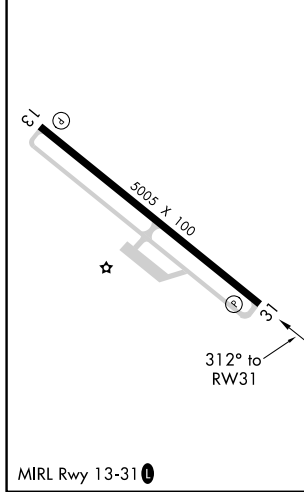
**MISSED APPROACH:**  
 Climb to 3000 direct TSKGE and hold.

ATLANTA APP CON ★  
**125.5 323.1**

UNICOM  
**122.8 (CTAF) 0**



ELEV 264	TDZE 264
----------	----------



3000 TSKGE	VGSi and RNAV glidepath not coincident (VGSi Angle 3.00/TCH 30).				4 NM Holding Pattern
↑	*LNAV only	BUSSA 2.3 NM to RW31	SPNKY 2000	ANGLS	3000
		*1020	2000	132° →	← 312°
	2.3 NM	3 NM	6.8 NM		
	GP 3.00°				TCH 40
CATEGORY	A	B	C	D	
LPV DA		627-1¼	363 (400-1¼)		
LNAV/VNAV DA		909-2½	645 (700-2½)		
LNAV MDA	860-1	596 (600-1)	860-1¼	596 (600-1¼)	
<b>C</b> CIRCLING	960-1 696 (700-1)	1060-1 796 (800-1)	1200-2¾ 936 (1000-2¾)	1260-3 996 (1000-3)	

SE-4, 08 SEP 2022 to 06 OCT 2022

SE-4, 08 SEP 2022 to 06 OCT 2022