

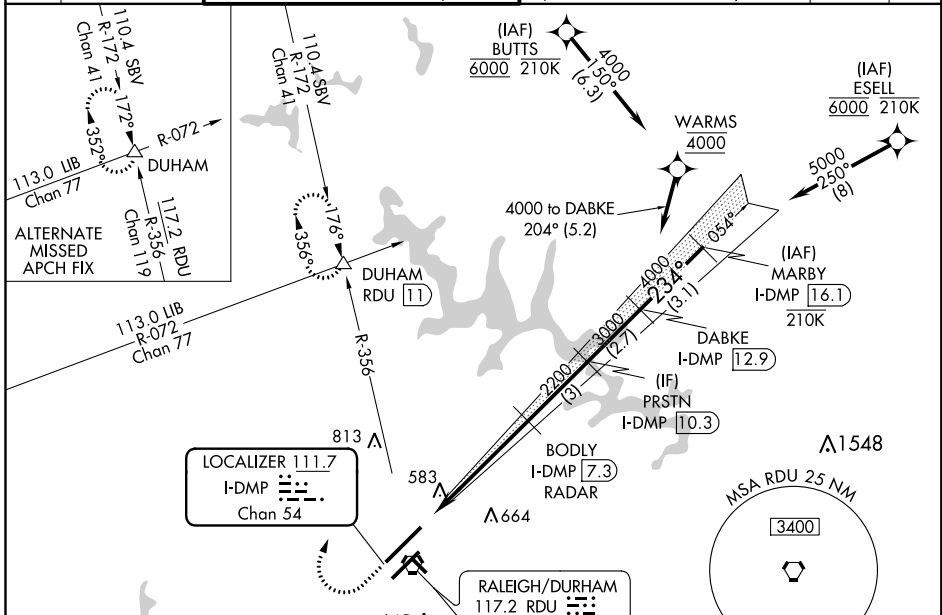
LOC/DME I-DMP 111.7 Chan 54	APP CRS 234°	Rwy Idg TDZE Apt Elev 10000 409 435
---	------------------------	---

ILS or LOC RWY 23R

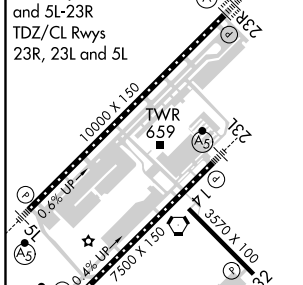
RALEIGH-DURHAM INTL (RDU)

RNAV 1-DME/DME/IRU or GPS or RADAR required for procedure entry. RADAR or DME required for LOC only.	ALSF-2 	MISSED APPROACH: Climb to 1000 then climbing right turn to 2200 on RDU VORTAC R-356 to DUHAM INT/RDU 11 DME and hold.
Simultaneous approach authorized. For inop ALS increase S-LOC 23R Cat C/D visibility to 1 1/2 SM.		

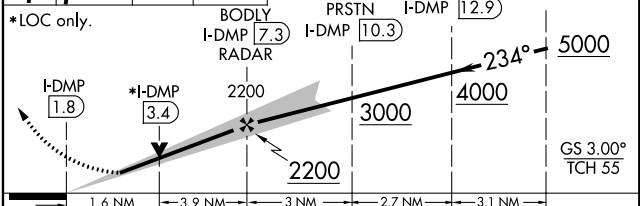
D-ATIS 123.8	RALEIGH APP CON 127.675 307.9	(EAST) RALEIGH TOWER (WEST) 127.45 257.8 119.3 257.8	(EAST) GND CON (WEST) 121.9 348.6 121.7 348.6	CLNC DEL 120.1	CPDLC
		Rwys 5R-23L and 14-32	Rwys 5R-23L and 14-32	Rwy 5L-23R	



ELEV 435	TDZE 409
REIL Rwy 32	234° 5.5 NM from FAF
MIRL Rwy 14-32	
HIRL Rwys 5R-23L and 5L-23R	
TDZ/CL Rwys 23R, 23L and 5L	



1000	2200	RDU R-356	DUHAM	VGSI and ILS glidepath not coincident (VGSI Angle 3.00/TCH 69).	MARBY I-DMP [16.1]
			BODY I-DMP [7.3] RADAR	PRSTN I-DMP [10.3]	DABKE I-DMP [12.9]



CATEGORY	A	B	C	D
S-ILS 23R	609/18 200 (200-1/2)			
S-LOC 23R	980/24 571 (600-1/2)	980-1 1/4 571 (600-1 1/4)		
CIRCLING	980-1 545 (600-1)	1020-1 1/2 585 (600-1 1/2)	1180-2 1/2 745 (800-2 1/2)	

SE-2, 08 SEP 2022 to 06 OCT 2022

SE-2, 08 SEP 2022 to 06 OCT 2022