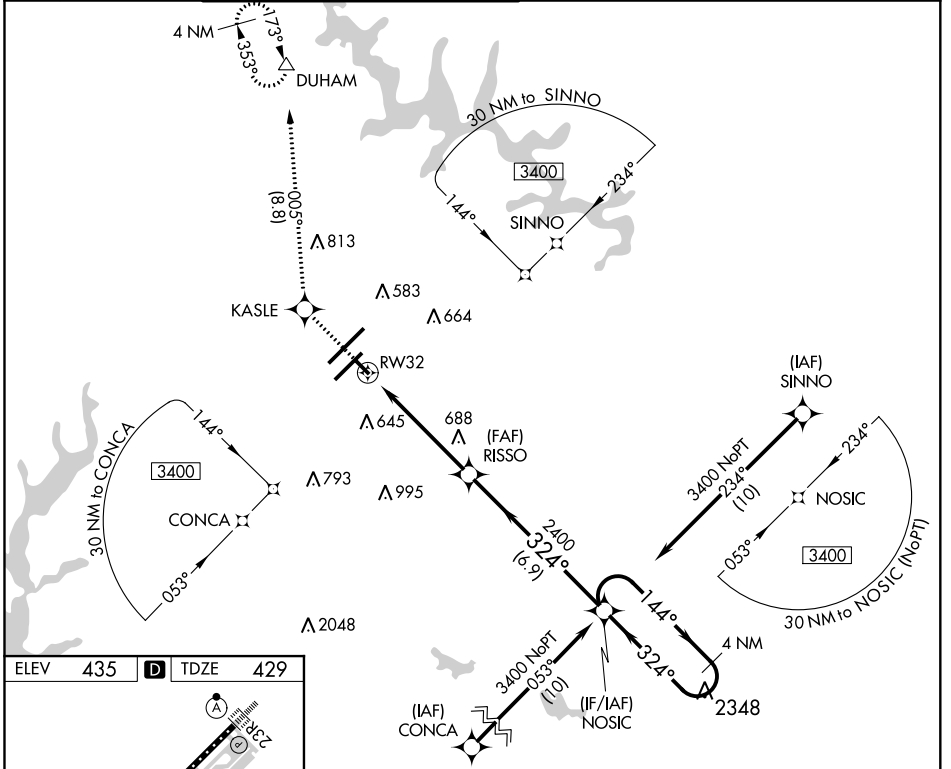


APP CRS	Rwy Idg	<b>3570</b>
<b>324°</b>	TDZE	<b>429</b>
	Apt Elev	<b>435</b>

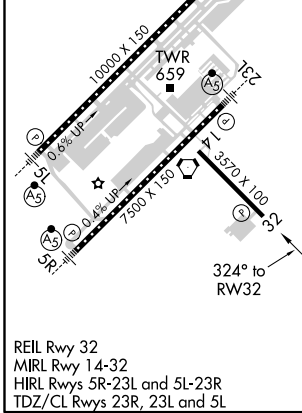
# RNAV (GPS) RWY 32

RALEIGH-DURHAM INTL (RDU)

RNP APCH.		Rwy 32 helicopter visibility reduction below 3/4 SM NA. Baro-VNAV NA below -15°C (5°F) or above 48°C (118°F).		MISSED APPROACH: Climb to 2200 direct KASLE and on track 005° to DUHAM and hold.		
D-ATIS	RALEIGH APP CON	(EAST) RALEIGH TOWER (WEST)	(EAST) GND CON	(WEST)	CLNC DEL	CPDLC
123.8	127.675 307.9	127.45 257.8 Rwys 5R-23L and 14-32	119.3 257.8 Rwy 5L-23R	121.9 348.6 Rwys 5R-23L and 14-32	121.7 348.6 Rwy 5L-23R	120.1



ELEV	435	<b>D</b>	TDZE	429
------	-----	----------	------	-----



REIL Rwy 32  
 MIRL Rwy 14-32  
 HIRL Rwys 5R-23L and 5L-23R  
 TDZ/CL Rwys 23R, 23L and 5L

2200	KASLE	tr 005°	DUHAM	4 NM Holding Pattern
*LNAV only.				
RW32 *1.3 NM to RW32		RISSO 2400	NOSIC 3400 GP 3.50° TCH 45	
1.3 NM		3.8 NM		6.9 NM
CATEGORY	A	B	C	D
LNAV/VNAV	DA	820-1¼ 391 (400-1¼)		NA
LNAV MDA	1000-1	571 (600-1)	1000-1½ 571 (600-1½)	NA
<b>C</b> CIRCLING	1000-1¼	565 (600-1¼)	1040-1¾ 605 (700-1¾)	NA

SE-2, 08 SEP 2022 to 06 OCT 2022

SE-2, 08 SEP 2022 to 06 OCT 2022