

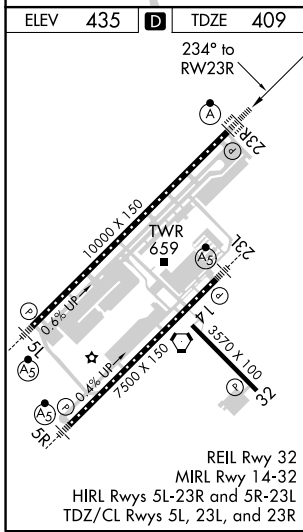
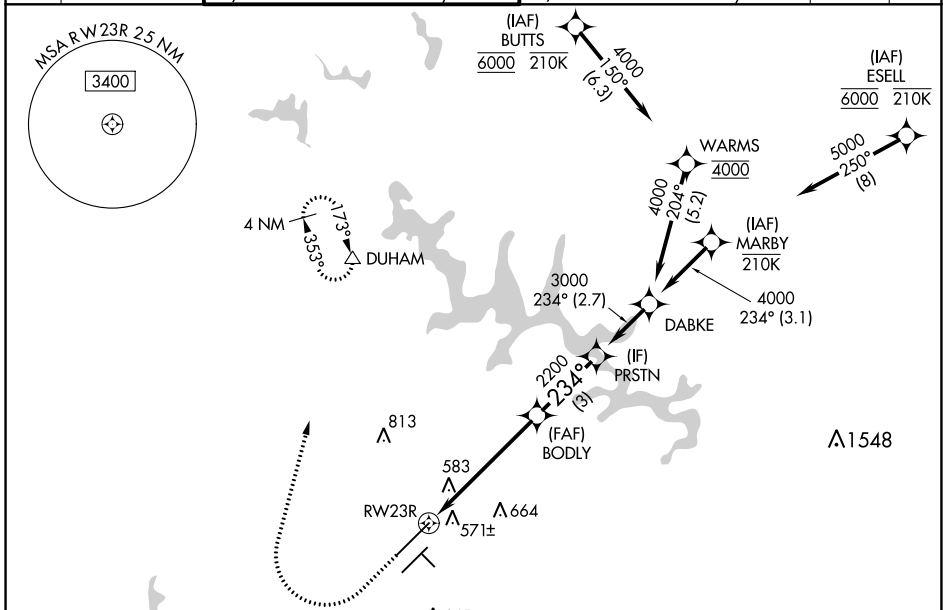
WAAS CH 45613 W23A	APP CRS 234°	Rwy Idg TDZE Apt Elev	10000 409 435
--	------------------------	-----------------------------	--

RNAV (GPS) Y RWY 23R

RALEIGH-DURHAM INTL (RDU)

RNP APCH - GPS.		ALSF-2	MISSED APPROACH: Climb to 1000 then climbing right turn to 2200 direct DUHAM and hold.
<p>Simultaneous approach authorized. LNAV procedure NA during simultaneous operations.</p> <p>Use of FD or AP providing RNAV track guidance required during simultaneous operations.</p> <p>For uncompensated Baro-VNAV systems, LNAV/VNAV NA below -12°C or above 54°C.</p> <p>For inop ALS, increase LNAV Cat C/D visibility to 1% SM.</p>			

D-ATIS	RALEIGH APP CON	(EAST) RALEIGH TOWER	(WEST)	(EAST) GND CON	(WEST)	CLNC DEL	CPDLC
123.8	127.675 307.9	127.45 257.8	119.3 257.8	121.9 348.6	121.7 348.6	120.1	
		Rwys 5R-23L and 1-4-32	Rwy 5L-23R	Rwys 5R-23L and 1-4-32	Rwy 5L-23R		



ELEV 435	TDZE 409	<p>234° to RWY 23R</p> <p>793</p> <p>1000 2200 DUHAM</p> <p>VGSI and RNAV glidepath not coincident (VGSI Angle 3.00/TCH 69).</p> <p>*LNAV only.</p> <p>RWY 23R</p> <p>BODY 2200</p> <p>PRSTN</p> <p>DABKE</p> <p>MARBY 5000</p> <p>GP 3.00° TCH 55</p> <p>1.6 NM → 3.9 NM → 3 NM → 2.7 NM → 3.1 NM</p>			
LPV DA	DA	609/18	200 (200-½)		
LNAV/VNAV DA	DA	735/26	326 (300-½)		
LNAV MDA	MDA	980/24	571 (600-½)	980-1¼	571 (600-1¼)
CIRCLING	CIRCLING	980-1	545 (600-1)	1020-1½	745 (800-2½)

SE-2, 08 SEP 2022 to 06 OCT 2022

SE-2, 08 SEP 2022 to 06 OCT 2022