

WAAS CH 99616 W13A	APP CRS 128°	Rwy Idg TDZE Apt Elev	7217 592 598
--	------------------------	-----------------------------	---

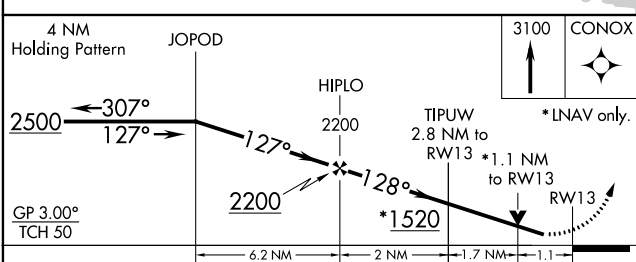
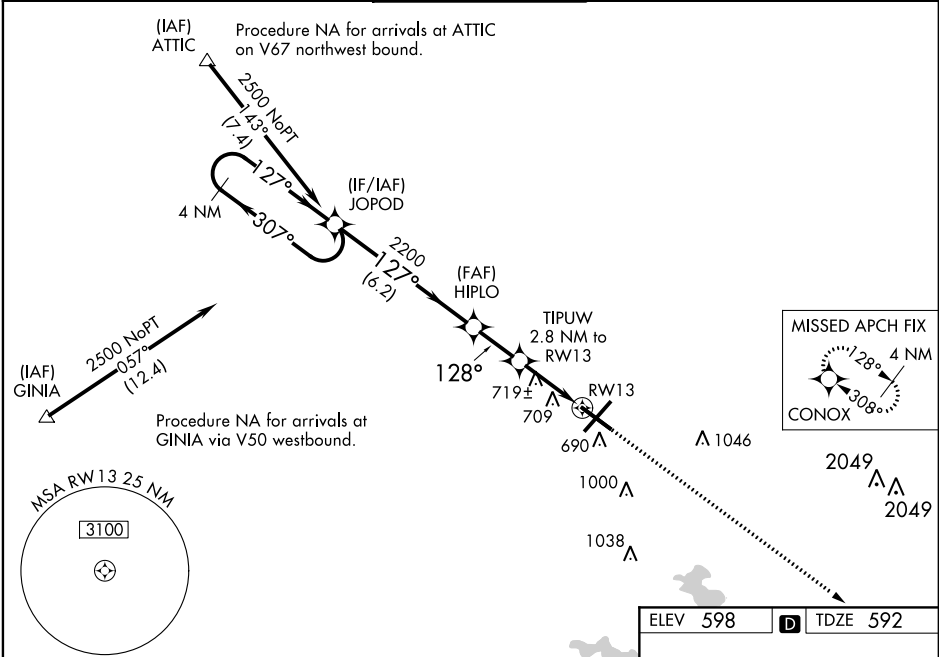
RNAV (GPS) RWY 13

ABRAHAM LINCOLN CAPITAL (SPI)

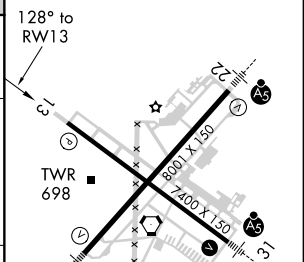
ASR For uncompensated Baro-VNAV systems, LNAV/VNAV NA below -16°C (4°F) or above 47°C (116°F). DME/DME RNP-0.3 NA. Visibility reduction by helicopters NA. When local altimeter setting not received, use Lincoln altimeter setting: increase all DA 57 feet and MDA 60 feet, increase LPV and LNAV/VNAV all Cats visibility ¼ SM, and increase LNAV and Circling Cats C and D visibility ¼ SM. Baro-VNAV NA when using Lincoln altimeter setting. VDP NA when using Lincoln altimeter setting.

MISSED APPROACH:
Climb to 3100 direct CONOX and hold.

ATIS 127.65 270.1	SAINT LOUIS TRACON 126.15 323.0	SPRINGFIELD TOWER ★ 121.3 (CTAF) 257.8	GND CON 121.9 348.6	CLNC DEL 121.7	UNICOM 122.95
-----------------------------	---	--	-------------------------------	--------------------------	-------------------------



ELEV 598	TDZE 592
----------	----------



CATEGORY	A	B	C	D
LPV DA	875-1 283 (300-1)			
LNAV/VNAV DA	1011-1½ 419 (500-1½)			
LNAV MDA	980-1 388 (400-1)		980-1¼ 388 (400-1¼)	
CIRCLING	1040-1 442 (500-1)	1100-1 502 (600-1)	1360-2¼ 762 (800-2¼)	1380-2½ 782 (800-2½)

MIRL Rwy 18-36

REIL Rwy 13

HIRL Rwy 4-22 and 13-31

EC-3, 08 SEP 2022 to 06 OCT 2022

EC-3, 08 SEP 2022 to 06 OCT 2022