

LOC/DME I-HDA 111.1 Chan 48	APP CRS 026°	Rwy Idg TDZE Apt Elev	9002 4744 4744
--	------------------------	-----------------------------	---

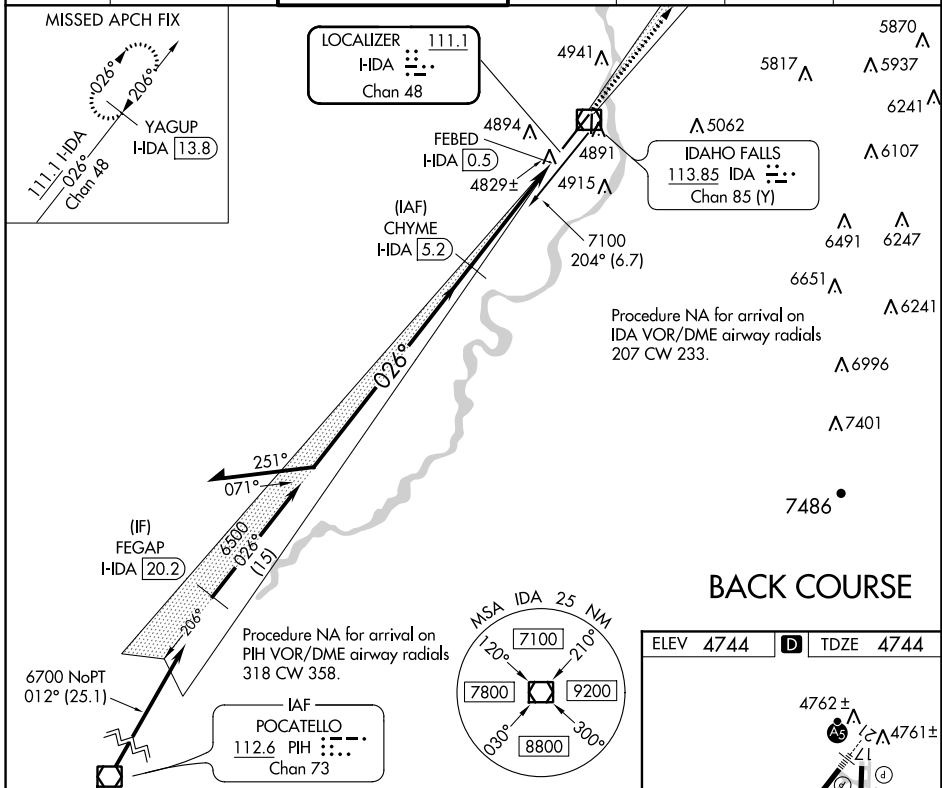
LOC BC RWY 3

IDAHO FALLS RGNL (IDA)

DME required.

MISSED APPROACH: Climb to 7000 on I-HDA localizer NE course 026° to YAGUP/I-HDA 13.8 DME and hold.

ATIS 135.325	SALT LAKE CENTER 128.35 239.25	IDAHO FALLS TOWER * 118.5 (CTAF) 0 257.8	GND CON 121.7	CLNC DEL 121.7	GCO 121.725	UNICOM 122.95
------------------------	--	--	-------------------------	--------------------------	-----------------------	-------------------------



Disregard glide slope indications. Remain within 15 NM

6500 206°

6500 026°

3.00° TCH 50

7000

CHYME I-HDA 5.2

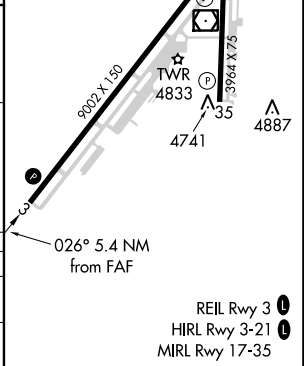
FEBED I-HDA 0.5

4.7 NM

0.7

VGSI and descent angles not coincident (VGSI Angle 3.00/TCH 35).

CATEGORY	A	B	C	D	E
S-LOC 3	5080-1 336 (400-1)				
CIRCLING	5200-1 456 (500-1)	5300-1 556 (600-1)	5400-1¼ 656 (700-1¾)	5420-2¼ 676 (700-2¼)	5420-2½ 676 (700-2½)



NW-1, 08 SEP 2022 to 06 OCT 2022

NW-1, 08 SEP 2022 to 06 OCT 2022