

SC-4, 08 SEP 2022 to 06 OCT 2022

NEW ORLEANS APP CON
 125.5 350.35 (WEST)
 133.15 290.3 (EAST)
 MSY D-ATIS
 127.55
 NEW ATIS
 124.9

ARRIVAL ROUTE DESCRIPTION

FIGHTING TIGER TRANSITION [LSU.AWDAD1]: From over LSU VORTAC on LSU R-135 to AWDAD INT.
LAFAYETTE TRANSITION [LFT.AWDAD1]: From over LFT VOTRAC on LFT R-092 and RQR R-273 to AWDAD INT.
LAKE CHARLES TRANSITION [LCH.AWDAD1]: From over LCH VORTAC on LCH R-080 and LFT R-264 to LFT VORTAC then on LFT R-092 and RQR R-273 to AWDAD INT.

From over AWDAD INT on RQR VOR/DME R-273 to VOODO INT.
LANDING KMSY RWY 11: Intercept I-MSY localizer and expect clearance for ILS RWY 11 approach.
LANDING OTHER: Expect vectors to final approach course.

AWDAD
 N30°06.99'
 W90°57.13'

TURBOJET VERTICAL NAVIGATION

PLANNING INFORMATION
 (Landing Louis Armstrong New Orleans Intl)
 250K Expect 11000
 250K Expect 13000
 (Landing other than Louis Armstrong New Orleans Intl)

NOTE: RADAR required.
 NOTE: DME required.



FIGHTING TIGER
 116.5 LSU
 Chan 112
 N30°29.11'-W91°17.64'
 L-21-22, H-7

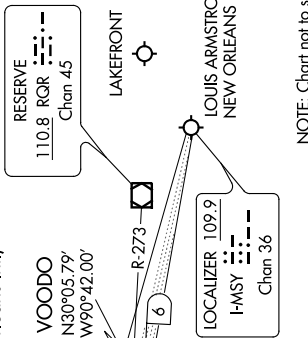
TURBOJET VERTICAL NAVIGATION
 Expect Fl 230

LAKE CHARLES
 113.4 LCH
 Chan 81
 N30°08.49'-W93°06.33'
 L-21-22, H-7

LAFAYETTE
 109.8 LFT
 Chan 35
 N30°11.63'-W91°59.55'
 L-21-22, H-7

TURBOJET VERTICAL NAVIGATION
 Expect 11000
 Expect 13000

PLANNING INFORMATION
 (Landing Louis Armstrong New Orleans Intl)
 250K Expect 11000
 250K Expect 13000
 (Landing other than Louis Armstrong New Orleans Intl)



NOTE: Chart not to scale.

SC-4, 08 SEP 2022 to 06 OCT 2022