

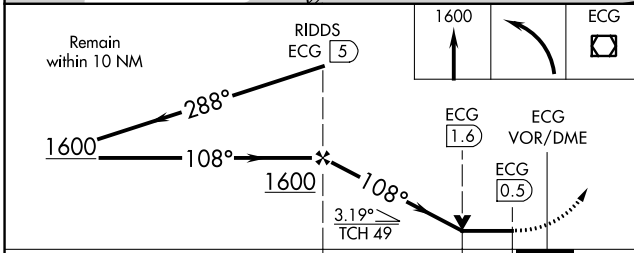
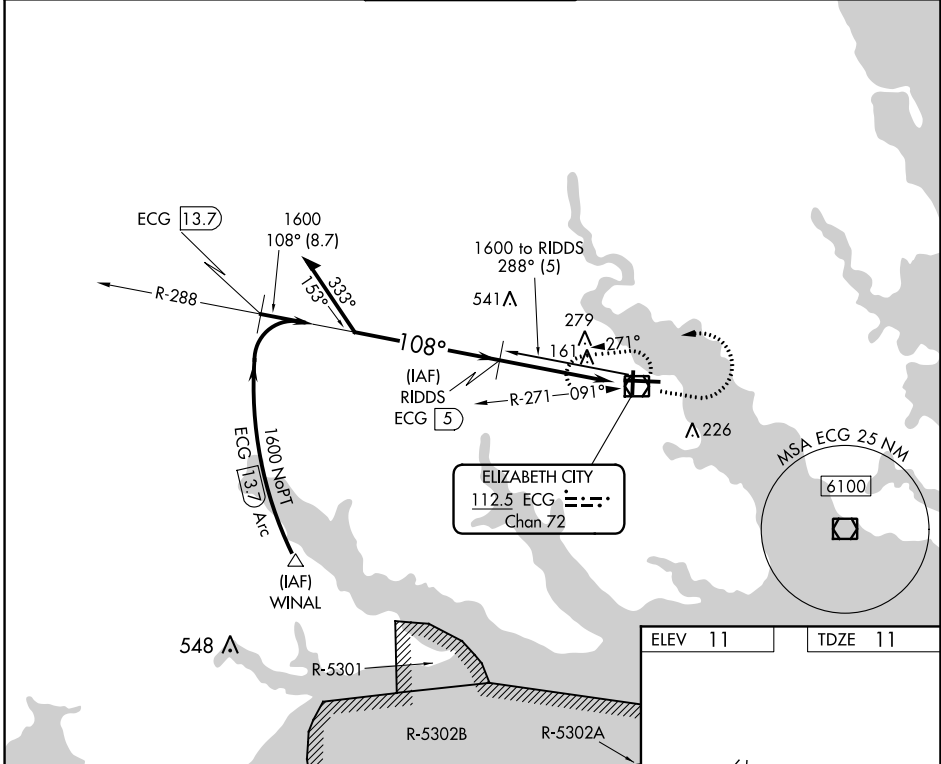
VOR/DME ECG	APP CRS	Rwy Idg	<b>7219</b>
<b>112.5</b>	<b>108°</b>	TDZE	<b>11</b>
Chan <b>72</b>		Apt Elev	<b>11</b>

# VOR/DME RWY 10

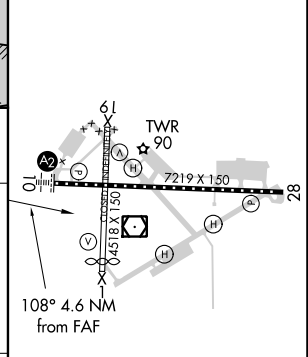
ELIZABETH CITY CG AIR STATION/RGNL (ECG)

<p><b>⚠</b> Procedure NA when tethered balloon located approximately 2 miles southeast of airport is flying. When local altimeter setting not received, use Currituck altimeter setting and increase all MDAs 40 feet and increase S-10 visibility Cats C/D 1/8 SM.</p>	SALS	MISSED APPROACH: Climb to 1600 then left turn direct ECG VOR/DME and hold.
	<b>A2</b>	

ASOS <b>124.375</b>	NORFOLK APP CON <b>119.55 269,425</b>	ELIZABETH CITY TOWER ★ <b>120.5 (CTAF) 355.6</b>	GND CON <b>121.9</b>	UNICOM <b>122.95</b>
------------------------	------------------------------------------	-----------------------------------------------------	-------------------------	-------------------------



ELEV 11	TDZE 11
---------	---------



CATEGORY	A	B	C	D
S-10	540-1 529 (600-1)		540-1¼ 529 (600-1¼)	
<b>C</b> CIRCLING	540-1 529 (600-1)		640-1¾ 629 (700-1¾)	640-2 629 (700-2)

SE-2, 08 SEP 2022 to 06 OCT 2022

SE-2, 08 SEP 2022 to 06 OCT 2022