

TYLER, TEXAS

AL-622 (FAA)

21336

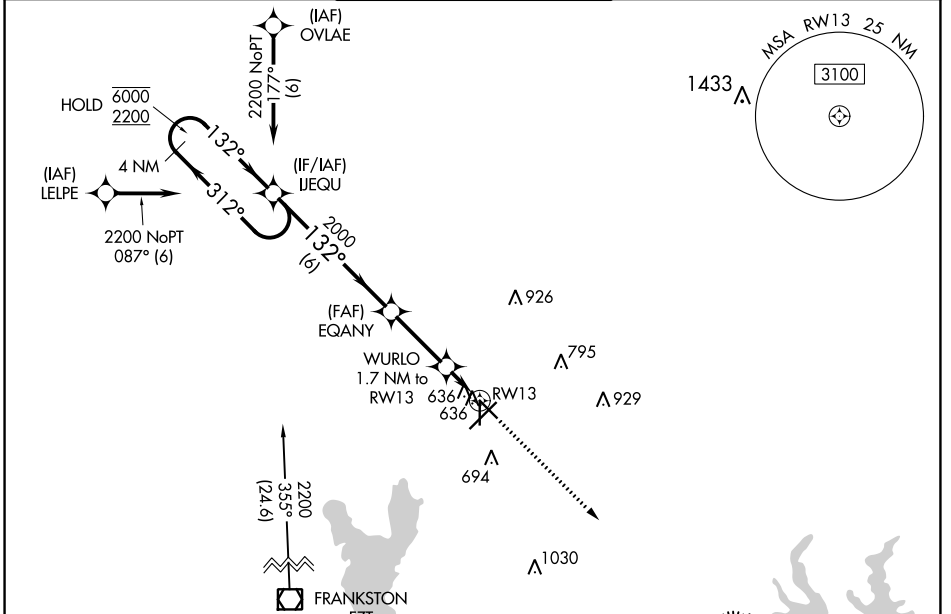
WAAS CH <b>45701</b> W13A	APP CRS <b>132°</b>	Rwy ldg <b>5198</b> TDZE <b>539</b> Apt Elev <b>544</b>
---------------------------------	------------------------	---------------------------------------------------------------

# RNAV (GPS) RWY 13

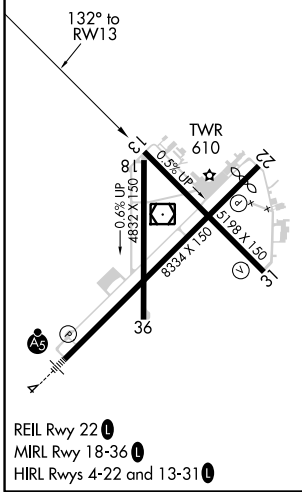
TYLER POUNDS RGNL (TYR)

RNP APCH.		MISSED APPROACH: Climb to 3000 direct JUHWO and hold.		
<p>▼ For uncompensated Baro-VNAV systems, LNAV/VNAV NA below -5°C or above 54°C.</p>				

ATIS <b>126.25</b>	LONGVIEW APP CON* <b>128.75 379.15</b>	POUNDS TOWER* <b>120.1(CTAF) 257.8</b>	GND CON <b>121.9</b>	UNICOM <b>122.95</b>
-----------------------	-------------------------------------------	-------------------------------------------	-------------------------	-------------------------



ELEV <b>544</b>	<b>D</b>	TDZE <b>539</b>
-----------------	----------	-----------------



4 NM Holding Pattern IJEQU		3000 JUHWO		
6000 ← 312°		*LNAV only.		
2200 → 132°				
GP 3.00° TCH 55				
EQANY 2000		WURLO 1.7 NM to RW13		
*1100		*1 NM to RW13 RW13		
6 NM		2.8 NM -0.7 -1 NM		
CATEGORY	A	B	C	D
LPV DA		739-3/4	200 (200-3/4)	
LNAV/VNAV DA		820-7/8	281 (300-7/8)	
LNAV MDA		900-1	361 (400-1)	
<b>C</b> CIRCLING	980-1 436 (500-1)	1020-1 476 (500-1)	1160-1 3/4 616 (700-1 3/4)	1280-2 1/4 736 (800-2 1/4)

TYLER, TEXAS  
Amdt 3A 08OCT20

32°21'N-95°24'W

# TYLER POUNDS RGNL (TYR) RNAV (GPS) RWY 13

SC-2, 08 SEP 2022 to 06 OCT 2022

SC-2, 08 SEP 2022 to 06 OCT 2022