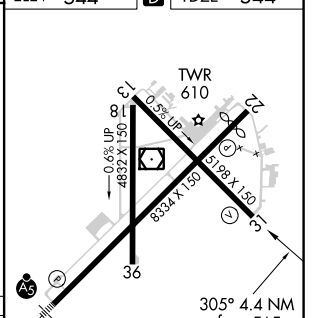
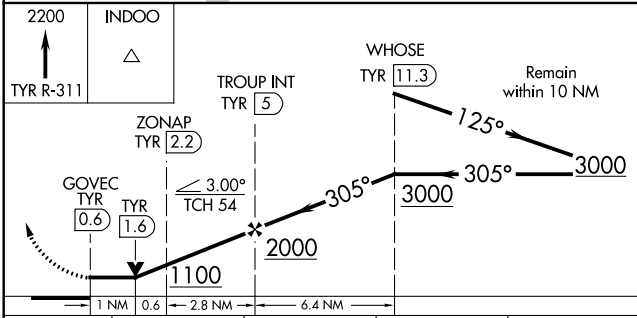
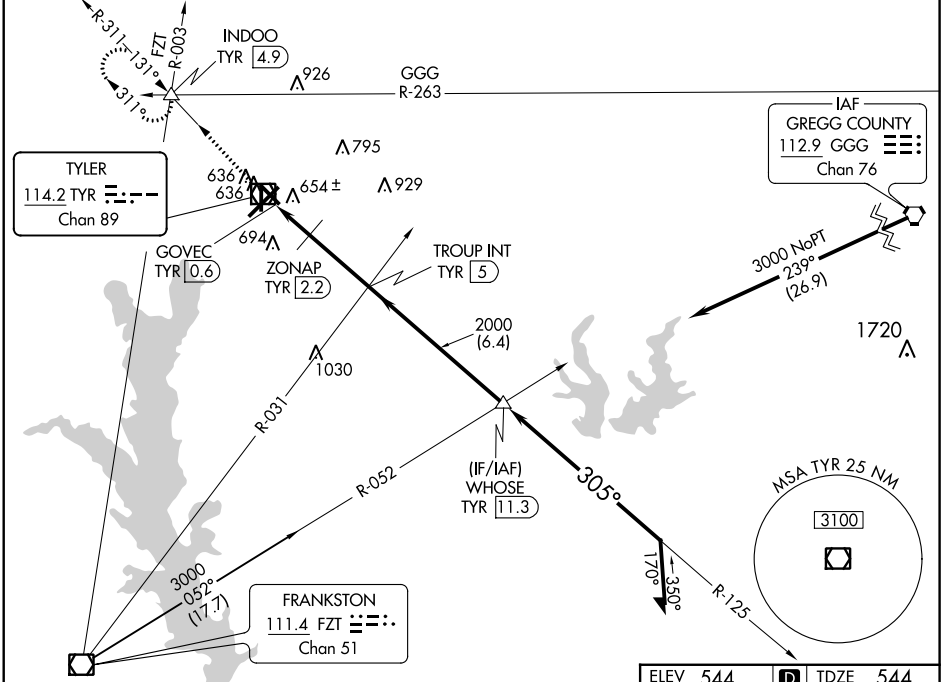


VOR/DME TYR	APP CRS	Rwy Idg TDZE	5198
114.2	305°	Apt Elev	544
Chan 89			

VOR RWY 31

TYLER POUNDS RGNL (TYR)

<p>▼ Rwy 31 helicopter visibility reduction below 3/4 SM NA.</p> <p>▲ MISSED APPROACH: Climb to 2200 on TYR VOR/DME R-311 to INDOO INT/4.9 DME and hold.</p>	<p>ATIS</p> <p>126.25</p>	<p>LONGVIEW APP CON*</p> <p>128.75 379.15</p>	<p>POUNDS TOWER*</p> <p>120.1 (CTAF) 257.8</p>	<p>GND CON</p> <p>121.9</p>	<p>UNICOM</p> <p>122.95</p>
--	---------------------------	---	---	-----------------------------	-----------------------------



CATEGORY	A	B	C	D
S-31	1100-1	556 (600-1)	1100-1 1/2	556 (600-1 1/2)
C CIRCLING	1100-1	556 (600-1)	1160-1 1/4 616 (700-1 1/4)	1280-2 1/4 736 (800-2 1/4)
ZONAP FIX MINIMUMS (DME REQUIRED)				
S-31	920-1 376 (400-1)			
C CIRCLING	980-1 436 (500-1)	1020-1 476 (500-1)	1160-1 1/4 616 (700-1 1/4)	1280-2 1/4 736 (800-2 1/4)

ELEV 544	D TDZE 544
REIL Rwy 22 1	FAF to MAP 4.4 NM
MIRL Rwy 18-36 1	
HIRL Rwys 4-22 and 13-31 1	
Knots	60 90 120 150 180
Min:Sec	4:24 2:56 2:12 1:46 1:28

SC-2, 08 SEP 2022 to 06 OCT 2022

SC-2, 08 SEP 2022 to 06 OCT 2022