

NEW ORLEANS, LOUISIANA

RNAV (GPS) RWY 14

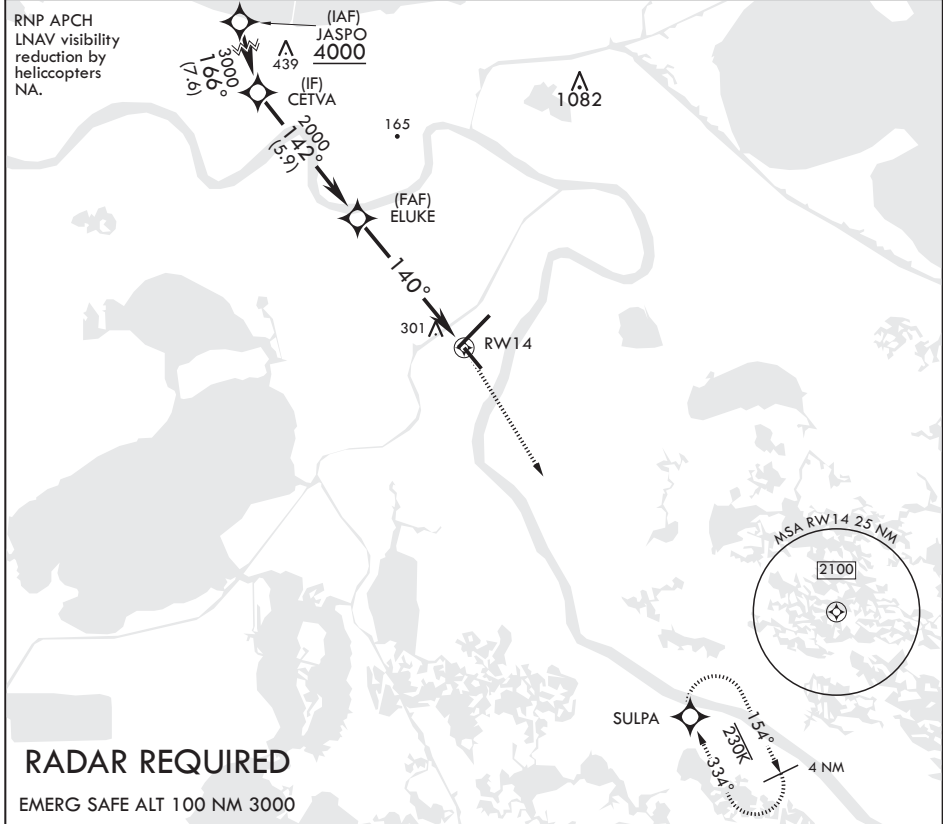
APCH CRS	Rwy Idg	6000
140°	TDZE	2
	Arprt Elev	2

AL-630 (USN)

NEW ORLEANS NAS JRB (ALVIN CALLENDER FLD) (KNBG)

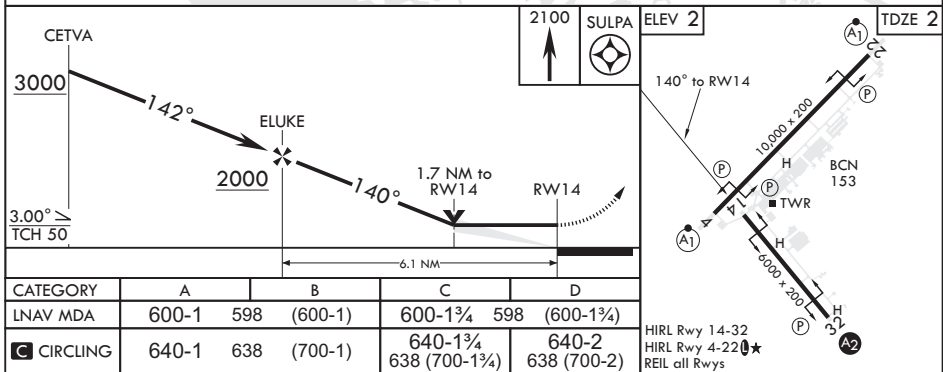
		MISSED APPROACH: Climbing right turn to 2100 direct SULPA and hold.			
--	--	---	--	--	--

ATIS*	APP CON/DEP CON	NAVY NEW ORLEANS TOWER*	GND CON	CLNC DEL	ASR/PAR
279.55	123.85 256.9	123.8 0* 340.2 (CTAF)	121.6 270.35	128.35 263.0	



RADAR REQUIRED

EMERG SAFE ALT 100 NM 3000



CATEGORY	A	B	C	D
LNAV MDA	600-1 598	(600-1)	600-1 598 (600-1 598)	600-1 598 (600-1 598)
CIRCLING	640-1 638	(700-1)	640-1 638 (700-1 638)	640-2 638 (700-2 638)

NEW ORLEANS, LOUISIANA

29°50'N - 90°02'W NEW ORLEANS NAS JRB (ALVIN CALLENDER FLD) (KNBG)

Amdt 2 04NOV21

RNAV (GPS) RWY 14

SC-4, 08 SEP 2022 to 06 OCT 2022

SC-4, 08 SEP 2022 to 06 OCT 2022