

NEW ORLEANS, LOUISIANA

# RNAV (GPS) RWY 4

APCH CRS <b>044°</b>	Rwy Idg TDZE Arprt Elev	<b>10,000</b> -2 2
-------------------------	-------------------------------	--------------------------

AL-630 (USN)

NEW ORLEANS NAS JRB (ALVIN CALLENDER FLD) (KNBG)

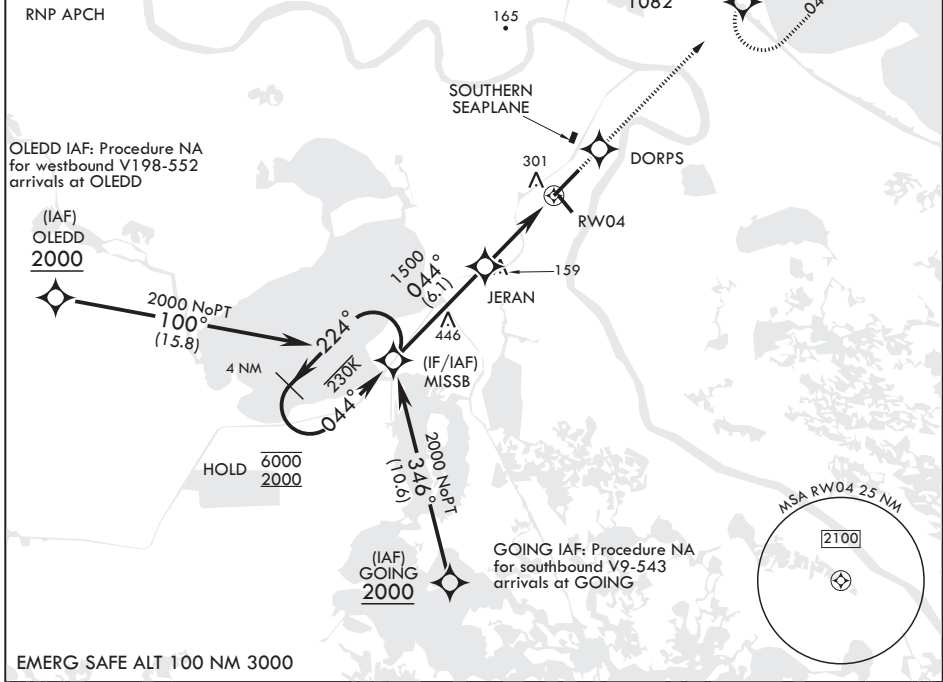
**V** \* When ALS inop, increase vis to 1 1/8 miles.  
\*\* When ALS inop, increase CAT AB vis to 1 mile; CAT CD vis to 1 1/8 miles.



MISSED APPROACH: Climb to 2100 direct DORPS, track 044° to BIBLY and hold.

ATIS* <b>279.55</b>	APP CON/DEP CON <b>123.85 256.9</b>	NAVY NEW ORLEANS TOWER* <b>123.8 0* 340.2 (CTAF)</b>	GND CON <b>121.6 270.35</b>	CLNC DEL <b>128.35 263.0</b>	ASR/PAR
------------------------	--	---	--------------------------------	---------------------------------	---------

For uncompensated Baro-VNAV systems, LNAV/VNAV NA below -15°C (5°F) or above 54°C (130°F).



6000 2000	← 224°	MISSB	044°	→ 2000	1500	JERAN	1 NM to RWY04	RWY04	2100	DORPS	tr 044°	BIBLY	ELEV 2	TDZE -2
GP 3.00° TCH 52							4.6 NM							
CATEGORY	A	B	C	D										
LNAV/VNAV DA*	379-5/8				381	(400-5/8)								
LNAV MDA**	380-1/2	382 (400-1/2)	380-5/8	382 (400-5/8)										
CI RCLING	640-1	638 (700-1)	640-1 1/4	638 (700-1 1/4)	640-2	638 (700-2)								

HIRL Rwy 14-32  
HIRL Rwy 4-22 0\*  
REIL all Rwys

NEW ORLEANS, LOUISIANA

29°50'N - 90°02'W NEW ORLEANS NAS JRB (ALVIN CALLENDER FLD) (KNBG)

Amdt 5 04NOV21

# RNAV (GPS) RWY 4

SC-4, 08 SEP 2022 to 06 OCT 2022

SC-4, 08 SEP 2022 to 06 OCT 2022