

VOR/DME or TACAN Z RWY 4

NEW ORLEANS NAS JRB
(ALVIN CALLENDER FLD) (KNBG)

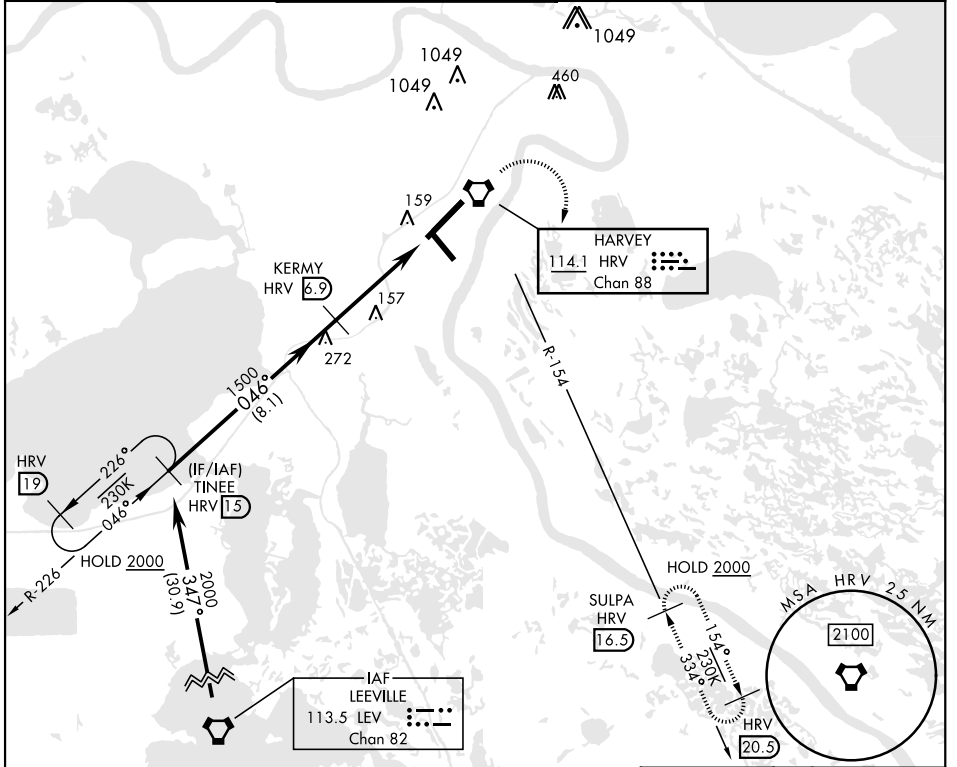
VORTAC HRV 114.1 Chan 88	APCH CRS 046°	Rwy ldg TDZE Arprt Elev 10,000 -2 2
--	-------------------------	---

AL-630 [USN]

RNAV or ATC RADAR monitoring required.

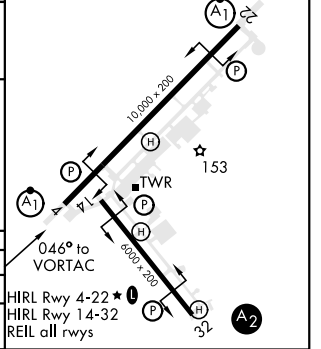
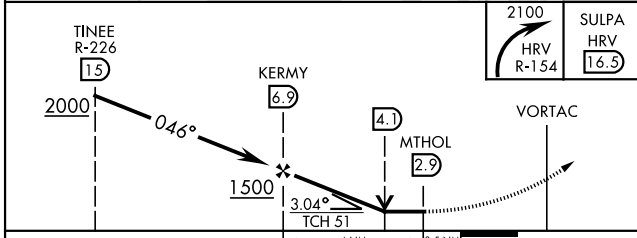
ALSF-1 MISSED APPROACH: Execute climbing right turn to 2100, intercept HRV R-154 to SULPA. Cross 10 DME at 2000. Hold at SULPA.

ATIS ★ 279.55	APP CON 123.85 256.9	NAVY NEW ORLEANS TOWER ★ 123.8 340.2 (CTAF)	GND CON 121.6 270.35	CLNC DEL 128.35 263.0	ASR/ PAR
-------------------------	--------------------------------	---	--------------------------------	---------------------------------	-------------



EMERG SAFE ALT 100 NM 3000

ELEV 2	TDZE -2
--------	---------



CATEGORY	A	B	C	D
S-4 *	600-½ 602 (600-½)	600-1¾ 602 (600-1¾)	640-1¾ 638 (700-1¾)	640-2 638 (700-2)
CIRCLING	640-1 638 (700-1)	640-1¾ 638 (700-1¾)	640-2 638 (700-2)	640-2 638 (700-2)

VOR/DME or TACAN Z RWY 4

SC-4, 08 SEP 2022 to 06 OCT 2022

SC-4, 08 SEP 2022 to 06 OCT 2022