

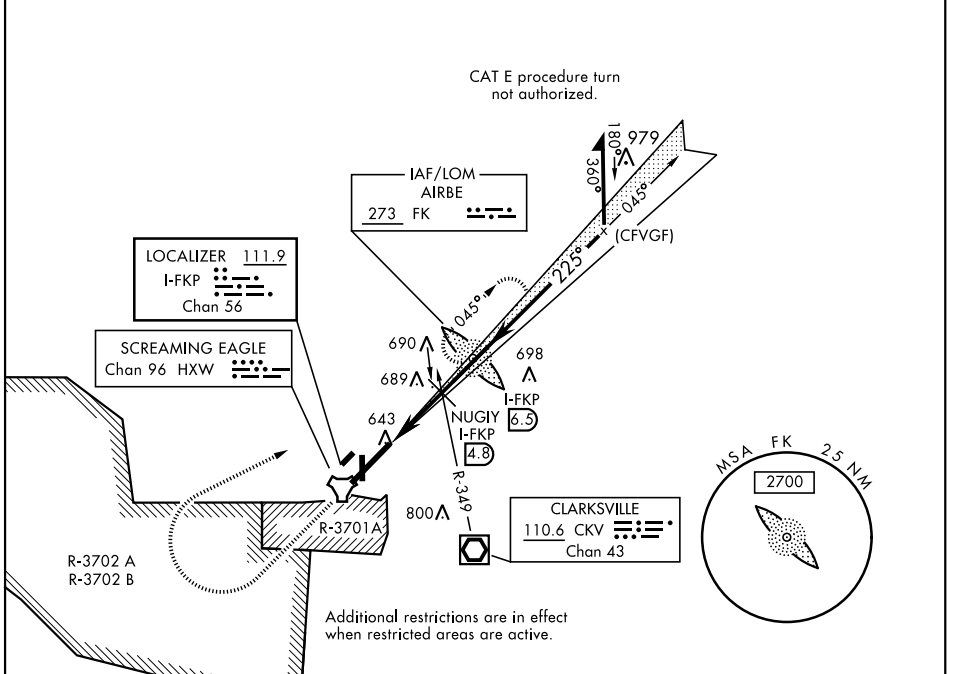
ILS or LOC RWY 23

LOC I-FKP 111.9 Chan 56	APCH CRS 225°	Rwy Idg 10,926 TDZE 571 Arprt Elev 571	AL-679 [USA]	CAMPBELL AAF (KHOP)
---	-------------------------	---	--------------	---------------------

RADAR required for procedure entry.		SSALR 	MISSED APPROACH: Climb to 1200 then climbing right turn to 2500 direct AIRBE LOM/I-FKP 6.5 DME, continue climb-in-hold to 2500.		
* When ALS inop, increase CAT E RVR to 40. RVR 18 authorized with use of FD or AP or HUD to DA.					

ATIS 125.175 308.4	APP CON 118.1 269.525	TOWER 120.9 278.8	GND CON 121.8 266.8	CLNC DEL 138.8	ASR/PAR
------------------------------	---------------------------------	-----------------------------	-------------------------------	--------------------------	---------

** When ALS inop, increase CAT CDE RVR to 55.
*** Circling not authorized SE of Rwy 5-23.



ELEV 571	TDZE 571				
1200	2500	AIRBE	I-FKP 6.3	AIRBE LOM I-FKP 6.5	Remain within 10 NM
GS 3.00° TCH 57	I-FKP DME 2.1	I-FKP 3.1	I-FKP 4.8	NUGIY I-FKP 4.8	2500
	2.7 NM	1.7 NM	1480	2200	045°
					225°
					VGSI and ILS glidepath not coincident.
CATEGORY	A	B	C	D	E
S-ILS 23 *	771/24		200	(200-½)	
S-LOC 23 **	940/24	369 (400-½)	940/40	369 (400-¾)	
*** CIRCLING	1060-1	489 (500-1)	1060-1½	489 (500-1½)	1140-2 569 (600-2)
FAF to MAP 4.4 NM					
Knots	60	90	120	150	180
Min:Sec	4:24	2:56	2:12	1:46	1:28

ILS or LOC RWY 23

SE-1, 08 SEP 2022 to 06 OCT 2022

SE-1, 08 SEP 2022 to 06 OCT 2022