

RNAV (GPS) RWY 18

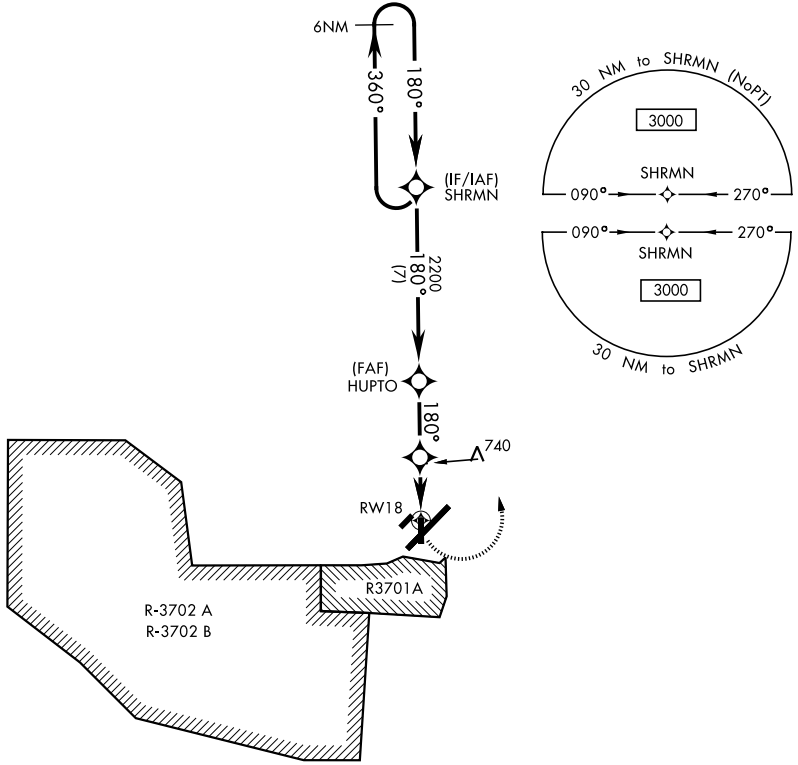
APCH CRS	Rwy ldg	4500
180°	TDZE	562
	Arpt Elev	571

AL-679 [USA]

CAMPBELL AAF (KHOP)

<p>▼ * Circling NA SE of RWY 5-23. DME/DME RNP-0.3 NA.</p>	<p>MISSED APPROACH: Climbing left turn to 3000 direct SHRMN and hold.</p>
--	---

<p>ATIS 125.175 308.4</p>	<p>APP CON 118.1 269.525</p>	<p>TOWER 120.9 278.8</p>	<p>GND CON 121.8 266.8</p>	<p>CLNC DEL 138.8</p>	<p>ASR/PAR</p>
--------------------------------------	---	-------------------------------------	---------------------------------------	----------------------------------	----------------



SE-1, 08 SEP 2022 to 06 OCT 2022

SE-1, 08 SEP 2022 to 06 OCT 2022

					<p>ELEV 571</p>	<p>TDZE 562</p>
CATEGORY	A	B	C	D	HIRL all Rwy	
LNVA MDA	1000-1	438 (500-1)	1000-1¼ 438 (500-1¼)	NA		
CIRCLING*	1060-1	489 (500-1)	1060-1½ 489 (500-1½)	NA		

RNAV (GPS) RWY 18