

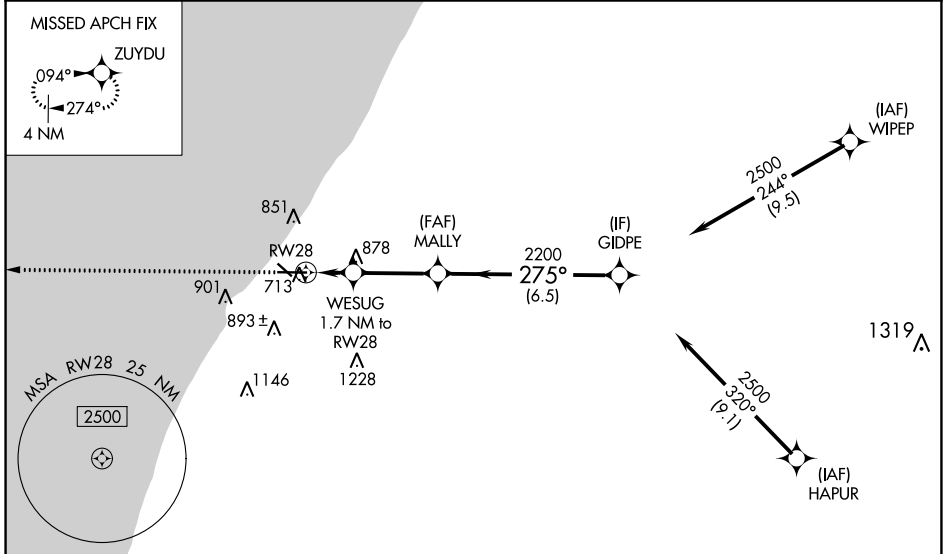
WAAS CH 45822 W28A	APP CRS 275°	Rwy Idg TDZE Apt Elev	6006 649 649
----------------------------------------	------------------------	-----------------------------	-----------------------------------------

RNAV (GPS) RWY 28

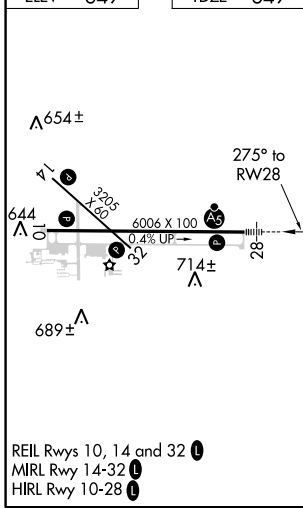
SOUTHWEST MICHIGAN RGNL (BEH)

RNP APCH. 		MALSR 	MISSED APPROACH: Climb to 2500 direct ZUYDU and hold.
For uncompensated Baro-VNAV systems, LNAV/VNAV NA below -19°C (-2°F) or above 39°C (102°F). Circling Rwy 14, 32 NA at night.			

ASOS 121.55	SOUTH BEND APP CON* 118.55 257.8	SOUTH BEND CLNC DEL 119.7	UNICOM 123.0 (CTAF) 0
-----------------------	--------------------------------------------	-------------------------------------	---------------------------------



ELEV 649	TDZE 649
-----------------	-----------------



2500	ZUYDU	GIDPE	
↑	✧	WESUG 1.7 NM to RWY 28	MALLY 2200
* LNAV only		2200	275°
RWY 28		1220*	2500
		1.7 NM	3 NM
		6.5 NM	
GP 3.00° TCH 45			
CATEGORY	A	B	C
LPV DA		849-½	200 (200-½)
LNAV/VNAV DA		941-½	292 (300-½)
LNAV MDA	1140-½	491 (500-½)	1140-1 491 (500-1)
CIRCLING	1140-1 491 (500-1)	1160-1 511 (600-1)	1300-1¾ 651 (700-1¾) 1340-2 691 (700-2)

EC-1, 08 SEP 2022 to 06 OCT 2022

EC-1, 08 SEP 2022 to 06 OCT 2022