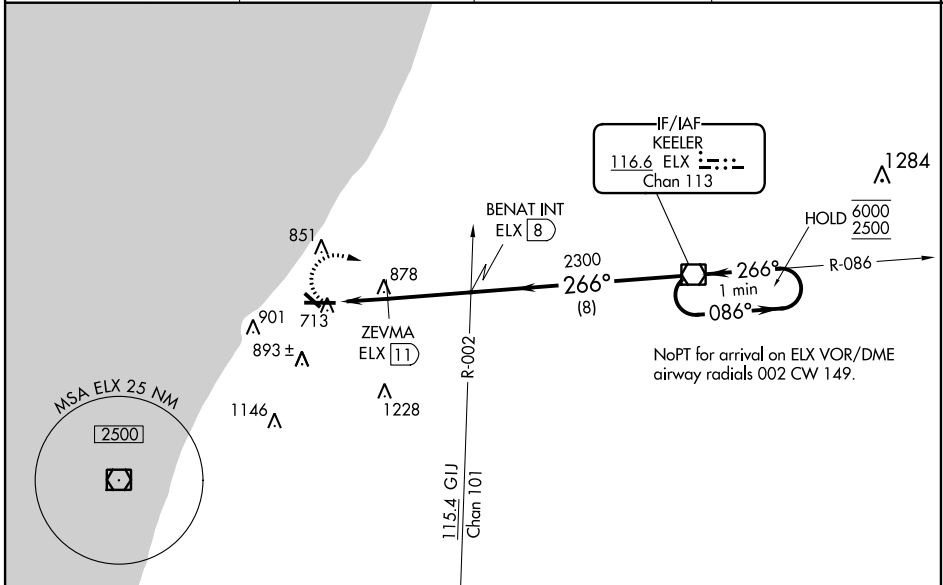


VOR/DME ELX 116.6	APP CRS 266°	Rwy Idg TDZE Apt Elev	6006 649 649
Chan 113			

VOR RWY 28

SOUTHWEST MICHIGAN RGNL (BEH)

DME required.		MALSR 	MISSED APPROACH: Climbing right turn to 2500 direct ELX VOR/DME and hold.
⚠ Circling Rwy 14, 32 NA at night. For inop ALS, increase S-28 Cats A and B visibility to 1 SM. ZEVMA fix minimums: for inop ALS, increase S-28 Cats A and B visibility to 1 SM and Cats C and D visibility to 1 3/8 SM.			
ASOS 121.55	SOUTH BEND APP CON * 118.55 257.8	SOUTH BEND CLNC DEL 119.7	UNICOM 123.0 (CTAF)



ELEV 649	TDZE 649	2500	ELX																																				
REIL Rwys 10, 14 and 32 MIRL Rwy 14-32 HIRL Rwy 10-28		ELX VOR/DME One Minute Holding Pattern																																					
FAF to MAP 4.9 NM		<table border="1"> <thead> <tr> <th>CATEGORY</th> <th>A</th> <th>B</th> <th>C</th> <th>D</th> </tr> </thead> <tbody> <tr> <td>S-28</td> <td>1300-1</td> <td>651 (700-1)</td> <td>1300-1 3/8</td> <td>651 (700-1 3/8)</td> </tr> <tr> <td>C CIRCLING</td> <td>1300-1</td> <td>651 (700-1)</td> <td>1300-1 3/4</td> <td>1340-2 1/4</td> </tr> <tr> <td colspan="5" style="text-align: center;">ZEVMA FIX MINIMUMS</td> </tr> <tr> <td>S-28</td> <td>1140-3/4</td> <td>491 (500-3/4)</td> <td>1140-1</td> <td>491 (500-1)</td> </tr> <tr> <td>C CIRCLING</td> <td>1140-1</td> <td>491 (500-1)</td> <td>1300-1 3/4</td> <td>1340-2 1/4</td> </tr> <tr> <td></td> <td>491 (500-1)</td> <td>511 (600-1)</td> <td>651 (700-1 3/4)</td> <td>691 (700-2 1/4)</td> </tr> </tbody> </table>			CATEGORY	A	B	C	D	S-28	1300-1	651 (700-1)	1300-1 3/8	651 (700-1 3/8)	C CIRCLING	1300-1	651 (700-1)	1300-1 3/4	1340-2 1/4	ZEVMA FIX MINIMUMS					S-28	1140-3/4	491 (500-3/4)	1140-1	491 (500-1)	C CIRCLING	1140-1	491 (500-1)	1300-1 3/4	1340-2 1/4		491 (500-1)	511 (600-1)	651 (700-1 3/4)	691 (700-2 1/4)
CATEGORY	A	B	C	D																																			
S-28	1300-1	651 (700-1)	1300-1 3/8	651 (700-1 3/8)																																			
C CIRCLING	1300-1	651 (700-1)	1300-1 3/4	1340-2 1/4																																			
ZEVMA FIX MINIMUMS																																							
S-28	1140-3/4	491 (500-3/4)	1140-1	491 (500-1)																																			
C CIRCLING	1140-1	491 (500-1)	1300-1 3/4	1340-2 1/4																																			
	491 (500-1)	511 (600-1)	651 (700-1 3/4)	691 (700-2 1/4)																																			
Knots	60 90 120 150 180																																						
Min:Sec	4:54 3:16 2:27 1:58 1:38																																						

EC-1, 08 SEP 2022 to 06 OCT 2022

EC-1, 08 SEP 2022 to 06 OCT 2022