

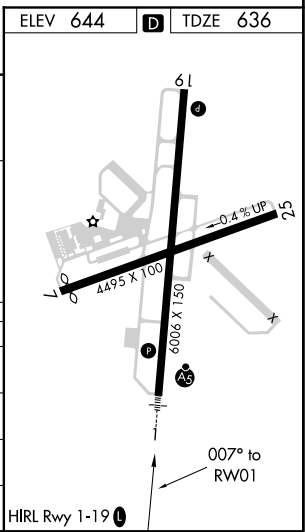
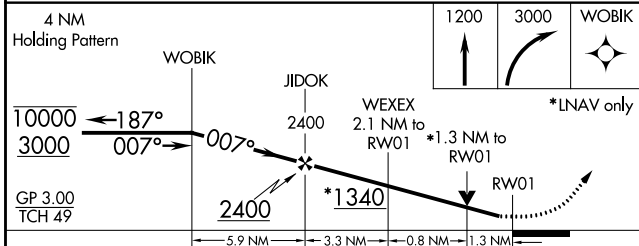
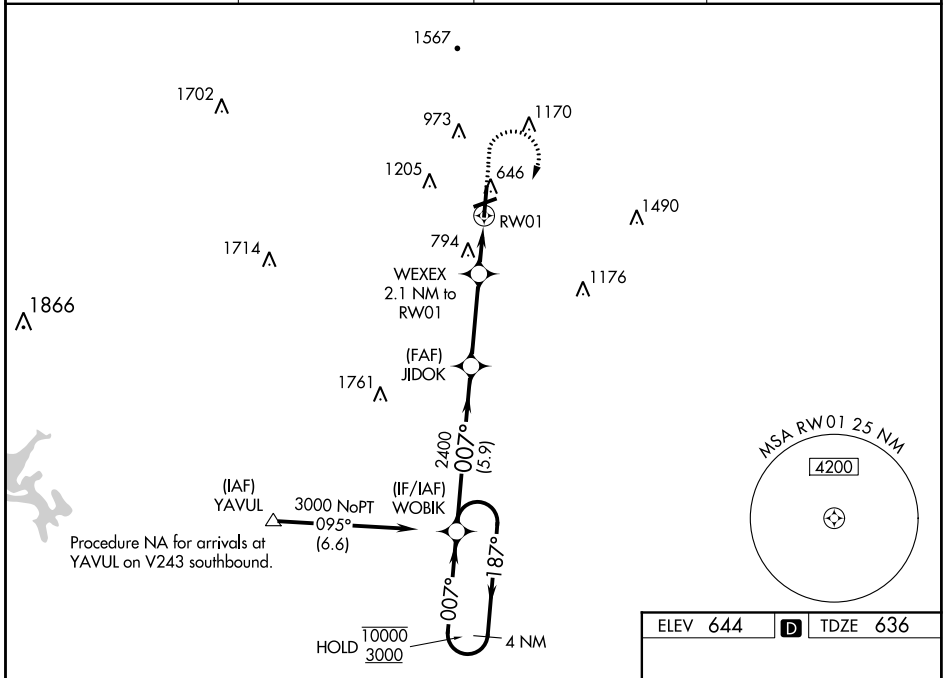
WAAS CH 78441 W01A	APP CRS 007°	Rwy Idg 6006 TDZE 636 Apt Elev 644
--	------------------------	---

RNAV (GPS) RWY 1

RICHARD B RUSSELL RGNL - J H TOWERS FLD (RMG)

RNP APCH. ▼ Rwy 1 helicopter visibility reduction below $\frac{3}{4}$ SM NA. For uncompensated Baro-VNAV systems, LNAV/VNAV NA below -10°C or above 54°C. Circling NA west of Rwy 1-19 at night. Circling NA northwest of Rwy 7 and 19. For inop ALS, increase LPV all Cats visibility to $\frac{3}{4}$ SM, LNAV/VNAV all Cats visibility to 1 SM, LNAV Cats A/B visibility to 1 SM, and LNAV Cats C/D visibility to $1\frac{3}{4}$ SM.	MALSRL 	MISSED APPROACH: Climb to 1200 then climbing right turn to 3000 direct WOBIK and hold.
--	------------	---

ASOS 119.925	ATLANTA CENTER 124.5 270.325	GCO 121.725	UNICOM 122.725 (CTAF) 0
------------------------	--	-----------------------	-----------------------------------



CATEGORY	A	B	C	D
LPV DA		937- $\frac{3}{4}$	301 (300- $\frac{3}{4}$)	
LNAV/ VNAV DA		994- $\frac{3}{4}$	358 (400- $\frac{3}{4}$)	
LNAV MDA	1100- $\frac{3}{4}$	464 (500- $\frac{3}{4}$)	1100-1	464 (500-1)
C CIRCLING	1140-1 496 (500-1)	1200-1 556 (600-1)	1480-2 $\frac{1}{2}$ 836 (900-2 $\frac{1}{2}$)	1860-3 1216 (1300-3)

SE-4, 08 SEP 2022 to 06 OCT 2022

SE-4, 08 SEP 2022 to 06 OCT 2022