

APP CRS	Rwy Idg	4380
057°	TDZE	644
	Apt Elev	644

RNAV (GPS) RWY 7

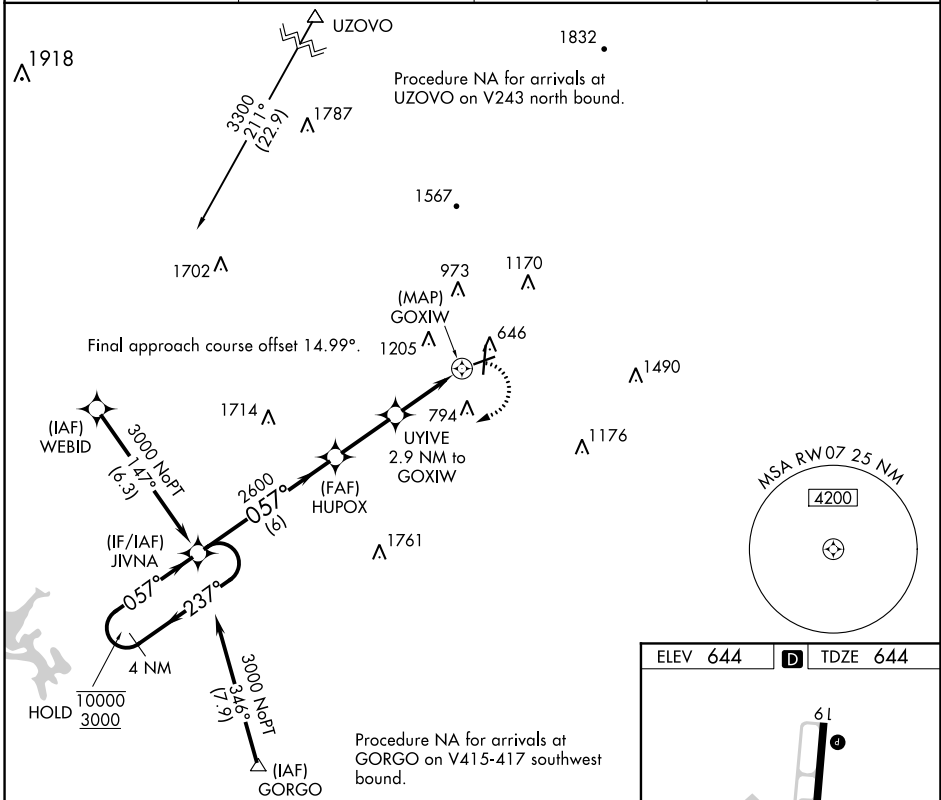
RICHARD B RUSSELL RGNL - J H TOWERS FLD (RMG)

RNP APCH.

▼ Rwy 7 helicopter visibility reduction below 3/4 SM NA.
▲ Straight-in minimums NA at night.
 Circling NA northwest of Rwys 7 and 19.

MISSED APPROACH: Climbing right turn to 3000 direct JIVNA and hold.

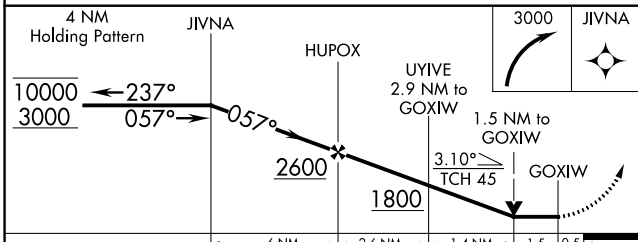
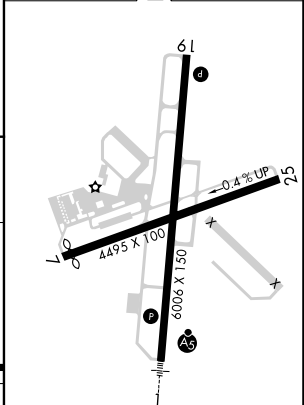
ASOS 119.925	ATLANTA CENTER 124.5 270.325	GCO 121.725	UNICOM 122.725 (CTAF) 0
------------------------	--	-----------------------	-----------------------------------



SE-4, 08 SEP 2022 to 06 OCT 2022

SE-4, 08 SEP 2022 to 06 OCT 2022

ELEV 644	D TDZE 644
----------	-------------------



CATEGORY	A	B	C	D
LNVA MDA	1340-1	696 (700-1)	1340-2	696 (700-2)
C CIRCLING	1340-1	696 (700-1)	1480-2 1/2 836 (900-2 1/2)	1860-3 1216 (1300-3)

HIRL Rwy 1-19 **0**

RNAV (GPS) RWY 7