

MANSFIELD, OHIO

VORTAC MFD
108.8
 Chan **25**

APCH CRS
130°

Rwy Idg **9001**
 THRE **1246**
 Arpt Elev **1297**

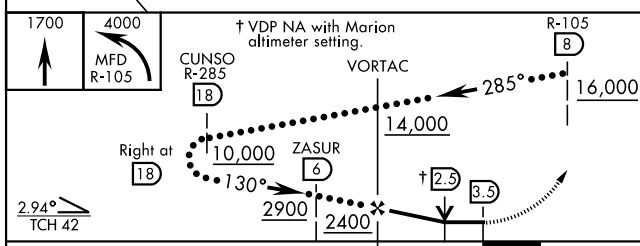
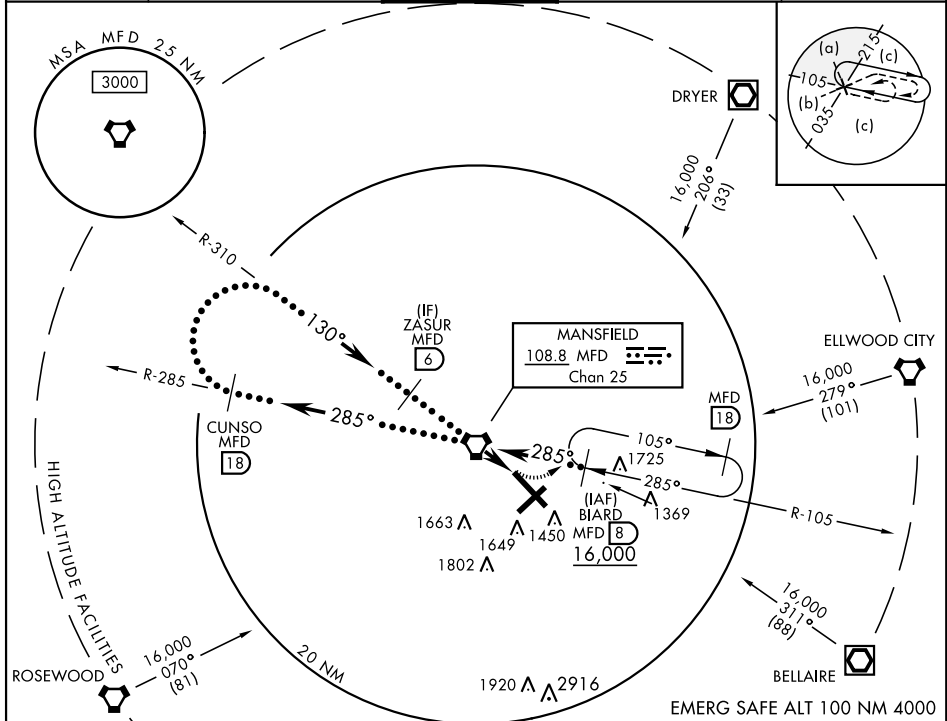
HI-VOR/DME or TACAN RWY 14

AL-860 [USAF]

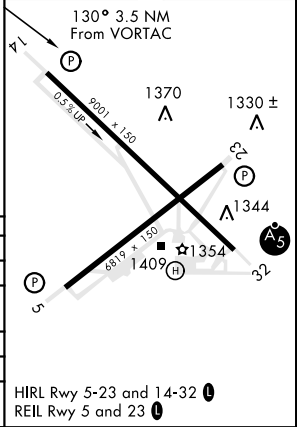
MANSFIELD LAHM RGNL (KMFD)

When control tower closed use Marion altimeter setting. MISSED APPROACH: Climb to 1700, then climbing left turn to 4000 on MFD VORTAC R-105 to BIARD/8 DME and hold, continue climb-in-hold to 4000.

ATIS 125.3	CLEVELAND APP CON 124.2 360.65	TOWER ★ 119.80 291.775	GND CON 121.8 291.775	UNICOM 122.95
----------------------	--	----------------------------------	---------------------------------	-------------------------



EMERG SAFE ALT 100 NM 4000



CATEGORY	C	D	E
S-14	1620-1	374	(400-1)
CIRCLING	1760-1½ 463 (500-1½)	1880-2 583 (600-2)	2000-2½ 703 (800-2½)
MARION ALTIMETER SETTING MINIMUMS			
S-14	1740-1¾	494	(500-1¾)
CIRCLING	1880-1½ 583 (600-1½)	2000-2¼ 703 (800-2¼)	2120-3 823 (900-3)

MANSFIELD, OHIO
 Amt 5 26JUL12

40°49'N-82°31'W

MANSFIELD LAHM RGNL (KMFD)

HI-VOR/DME or TACAN RWY 14

EC-2, 08 SEP 2022 to 06 OCT 2022

EC-2, 08 SEP 2022 to 06 OCT 2022