

WAAS CH 99611 W32A	APP CRS 323°	Rwy Idg TDZE Apt Elev	9001 1293 1297
--	------------------------	-----------------------------	---

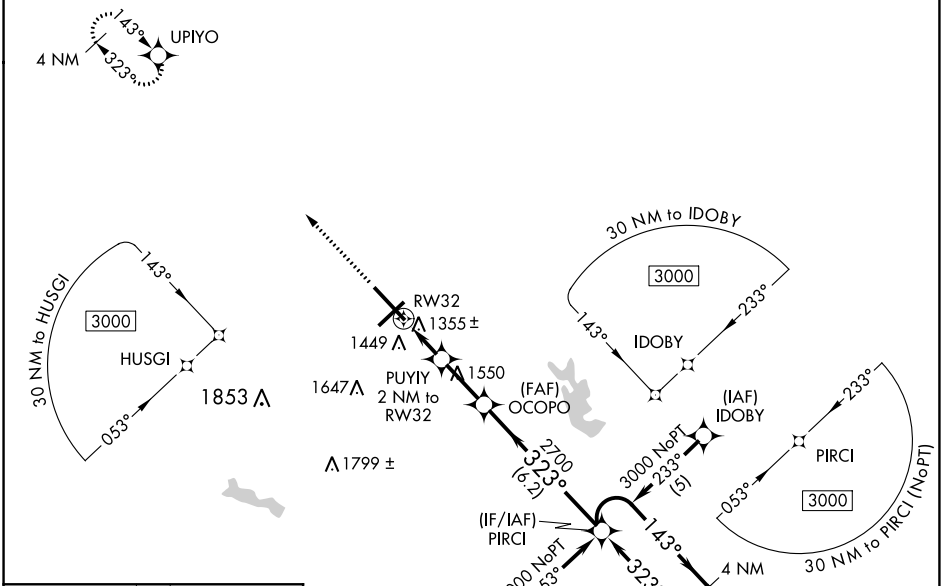
RNAV (GPS) RWY 32

MANSFIELD LAHM RGNL (MFD)

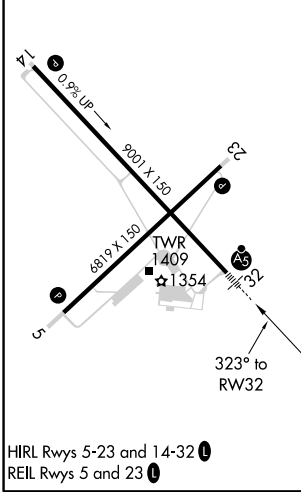
⚠ Baro-VNAV NA when using Marion altimeter setting. For uncompensated Baro-VNAV systems, LNAV/VNAV NA below -17°C (2°F) or above 46°C (114°F). DME/DME RNP-0.3 NA. When local altimeter not received, use Marion altimeter setting and increase all DA 107 feet and all MDA 120 feet, LNAV/VNAV all Cats visibility ½ SM, LNAV Cat C/D visibility ⅓ SM and Circling Cat C/D visibility ½ SM. For inop MALS when using Marion altimeter setting increase LPV all Cats visibility to 1. VDP NA with Marion altimeter setting. ** RVR 1800 authorized with use of FD or AP or HUD to DA, NA when using Marion altimeter setting.

MALS MISSED APPROACH:
Climb to 3000 direct UPIYO and hold.

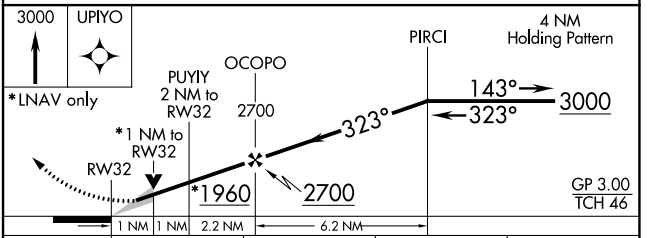
ATIS 125.3	CLEVELAND APP CON * 124.2 360.65	MANSFIELD TOWER * 119.8 (CTAF) 0291.775	GND CON 121.8 291.775	UNICOM 122.95
----------------------	--	---	---------------------------------	-------------------------



ELEV 1297	D	TDZE 1293
------------------	----------	------------------



HIRL Rwy 5-23 and 14-32
REIL Rwy 5 and 23



CATEGORY	A	B	C	D
LPV DA**		1493/24	200 (200-½)	
LNAV/VNAV DA		1789/60	496 (500-1¼)	
LNAV MDA	1660/24	367 (400-½)	1660/35	367 (400-⅝)
C CIRCLING	1760-1	463 (500-1)	2000-2 703 (800-2)	2000-2¼ 703 (800-2¼)

EC-2, 08 SEP 2022 to 06 OCT 2022

EC-2, 08 SEP 2022 to 06 OCT 2022