

WAAS CH 87101 W17A	APP CRS 176°	Rwy Idg 8002 TDZE 199 Apt Elev 203
--	------------------------	--

RNAV (GPS) RWY 17

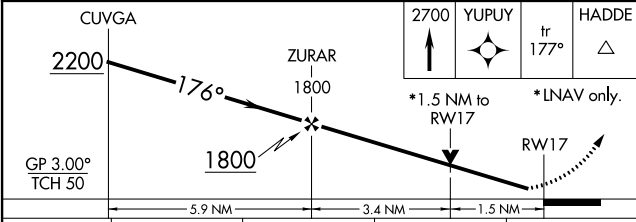
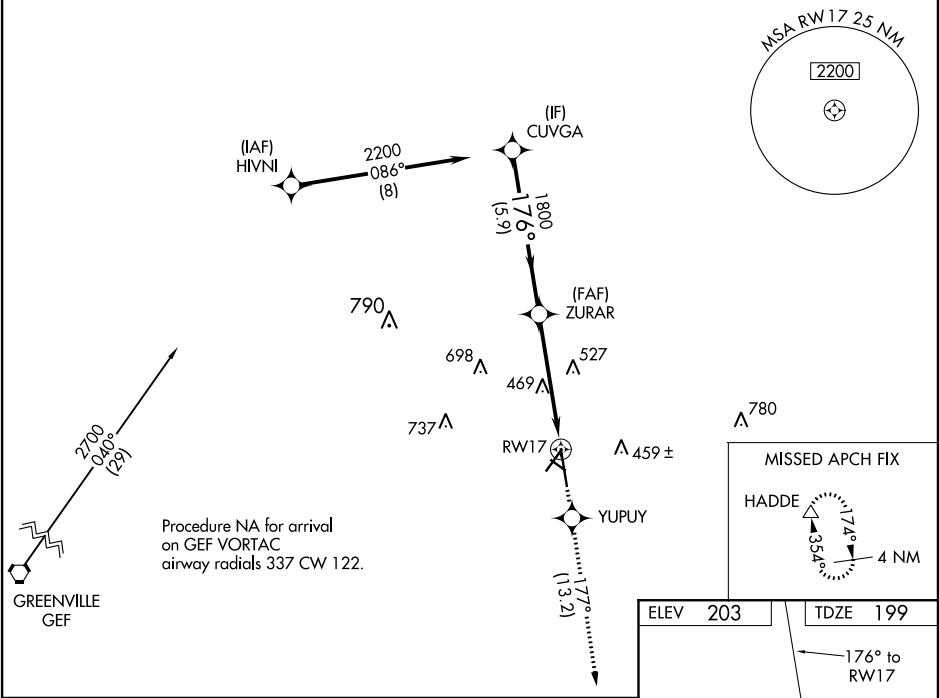
VALDOSTA RGNL (VLD)

RNP APCH-GPS.

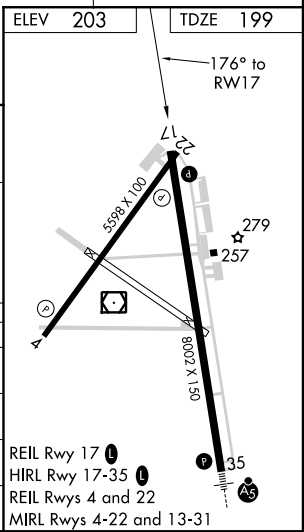
⚠ For uncompensated Baro-VNAV systems, LNAV/VNAV NA below -6°C or above 54°C. Circling Rwy 4, 13, 31 NA at night. Rwy 17 helicopter visibility reduction below 3/4 SM NA. When local altimeter setting not received, use Moultrie altimeter setting: increase LPV DA to 542 feet and all visibilities 3/8 SM; increase LNAV/VNAV DA to 546 and all visibilities 1/4 SM; increase all MDA 100 feet and visibility Cat C and D 1/4 SM. Baro-VNAV and VDP NA when using Moultrie altimeter setting.

MISSED APPROACH:
Climb to 2700 direct YUPUY and on track 177° to HADDE and hold.

ASOS 126.225	VALDOSTA APP CON * 126.6 285.6	VALDOSTA TOWER * 120.9 (CTAF) 0	GND CON 121.7	UNICOM 122.95
------------------------	--	---	-------------------------	-------------------------



CATEGORY	A	B	C	D
LPV DA		454-3/4	255 (300-3/4)	
LNAV/VNAV DA		458-7/8	259 (300-7/8)	
LNAV MDA	720-1	521 (600-1)	720-1 1/2	521 (600-1 1/2)
CIRCLING	720-1	517 (600-1)	900-2 697 (700-2)	1020-2 3/4 817 (900-2 3/4)



SE-4, 08 SEP 2022 to 06 OCT 2022

SE-4, 08 SEP 2022 to 06 OCT 2022