

WAAS CH 86206 W35A	APP CRS 356°	Rwy Idg TDZE Apt Elev	8002 200 203
--	------------------------	-----------------------------	---

RNAV (GPS) RWY 35

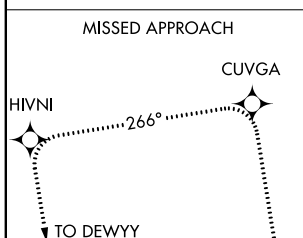
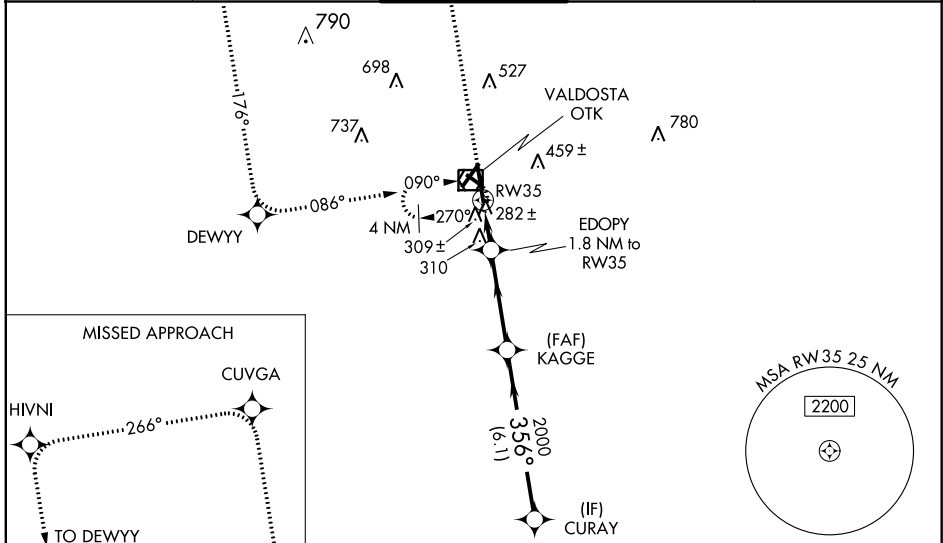
VALDOSTA RGNL (VLD)

RNP APCH-GPS.

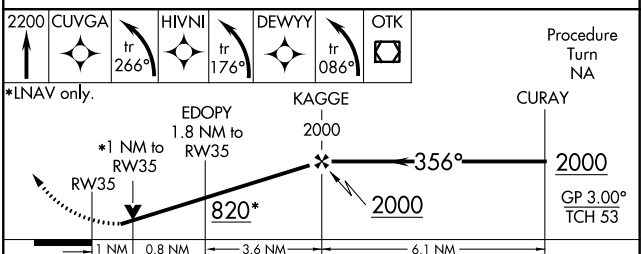
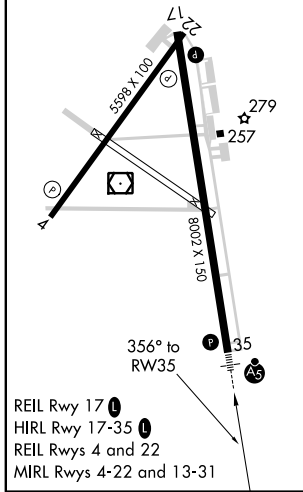
Baro-VNAV NA when using Moultrie altimeter setting. For uncompensated Baro-VNAV systems, LNAV/VNAV NA below -15°C or above 54°C. Visibility reduction by helicopters NA. When local altimeter setting not received, use Moultrie altimeter setting: increase LPV DA to 577 feet; increase LNAV/VNAV DA to 697 feet and all visibilities ¼ SM; increase all MDAs 100 feet and visibility Cat C and D ¼ SM. For inop MALSRL, increase LPV all Cats visibility to 1 mile, increase LNAV Cats A, B, and C visibility to 1 mile, and increase LNAV Cat D visibility to 1¼ mile. For inop MALSRL when using Moultrie altimeter setting, increase LNAV Cats A and B visibility to 1 mile. VDP NA when using Moultrie altimeter setting. Circling to Rwy 4, 13, and 31 NA at night.

MALSRL
MISSED APPROACH: Climb to 2200 direct CUVGA and left turn on track 266° to HIVNI and left turn on track 176° to DEWVY left turn on track 086° to OTK VOR/DME and hold.

ASOS 126.225	VALDOSTA APP CON ★ 126.6 285.6	VALDOSTA TOWER ★ 120.9 (CTAF) 0	GND CON 121.7	UNICOM 122.95
------------------------	--	---	-------------------------	-------------------------



ELEV 203	TDZE 200
----------	----------



CATEGORY	A	B	C	D
LPV DA	489-¾ 289 (300-¾)			
LNAV/ VNAV DA	609-1 409 (500-1)			
LNAV MDA	560-¾ 360 (400-¾)		560-1 360 (400-1)	
CIRCLING	640-1 437 (500-1)	700-1 497 (500-1)	900-2 697 (700-2)	1020-2¾ 817 (900-2¾)

SE-4, 08 SEP 2022 to 06 OCT 2022

SE-4, 08 SEP 2022 to 06 OCT 2022