

VOR/DME OTK 114.8 Chan 95	APP CRS 338°	Rwy Idg 8002 TDZE 200 Apt Elev 203
---	------------------------	---

VOR RWY 35

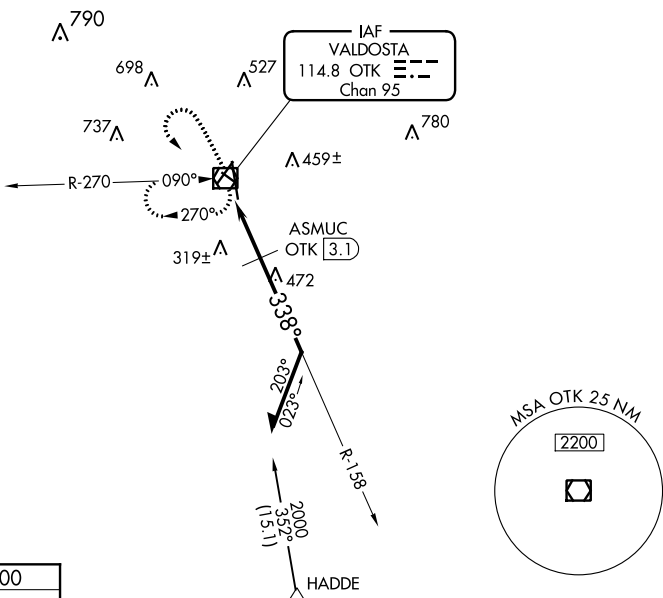
VALDOSTA RGNL (VLD)

⚠ For inop ALS, increase S-35 Cats A/B visibility to 1 SM. ASMUC FIX MINIMUMS: increase S-35 Cats A/B/C visibility to 1 SM and Cat D to 1 1/4 SM. Rwy 35 helicopter visibility reduction below 3/4 SM NA. VDP NA with Moultrie altimeter setting. When local altimeter setting not received, use Moultrie altimeter setting and increase all MDAs 100 feet and increase all Cat C/D visibilities 1/2 SM. Circling Rwy 4, 13, 31 NA at night.

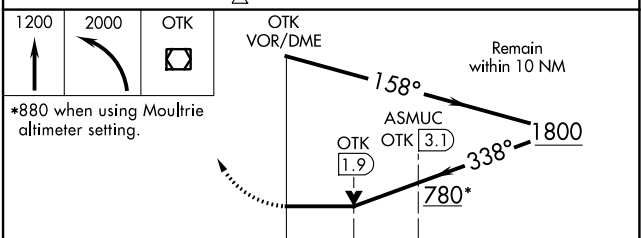
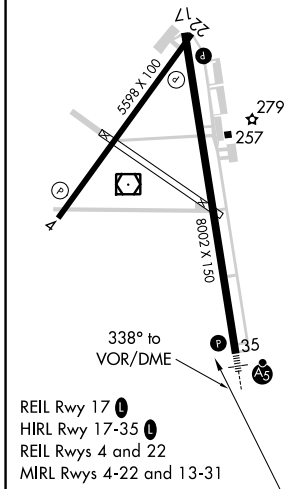
MALSR

MISSED APPROACH: Climb to 1200 then climbing left turn to 2000 direct OTK VOR/DME and hold, continue climb-in-hold to 2000.

ASOS 126.225	VALDOSTA APP CON * 126.6 285.6	VALDOSTA TOWER * 120.9 (CTAF)	GND CON 121.7	UNICOM 122.95
------------------------	--	---	-------------------------	-------------------------



ELEV 203	TDZE 200
----------	----------



CATEGORY	A	B	C	D
S-35	780-3/4	580 (600-3/4)	780-1 580 (600-1)	780-1 1/4 580 (600-1 1/4)
CIRCLING	780-1	577 (600-1)	900-2 697 (700-2)	1020-2 3/4 817 (900-2 3/4)
ASMUC FIX MINIMUMS				
S-35		580-3/4 380 (400-3/4)		580-1 380 (400-1)
CIRCLING	640-1 437 (500-1)	700-1 497 (500-1)	900-2 697 (700-2)	1020-2 3/4 817 (900-2 3/4)

SE-4, 08 SEP 2022 to 06 OCT 2022

SE-4, 08 SEP 2022 to 06 OCT 2022