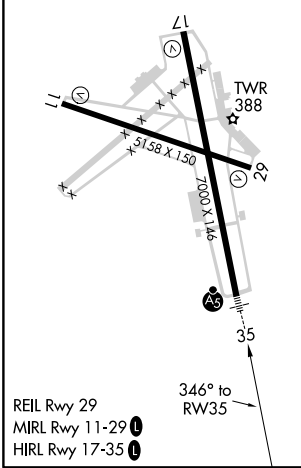
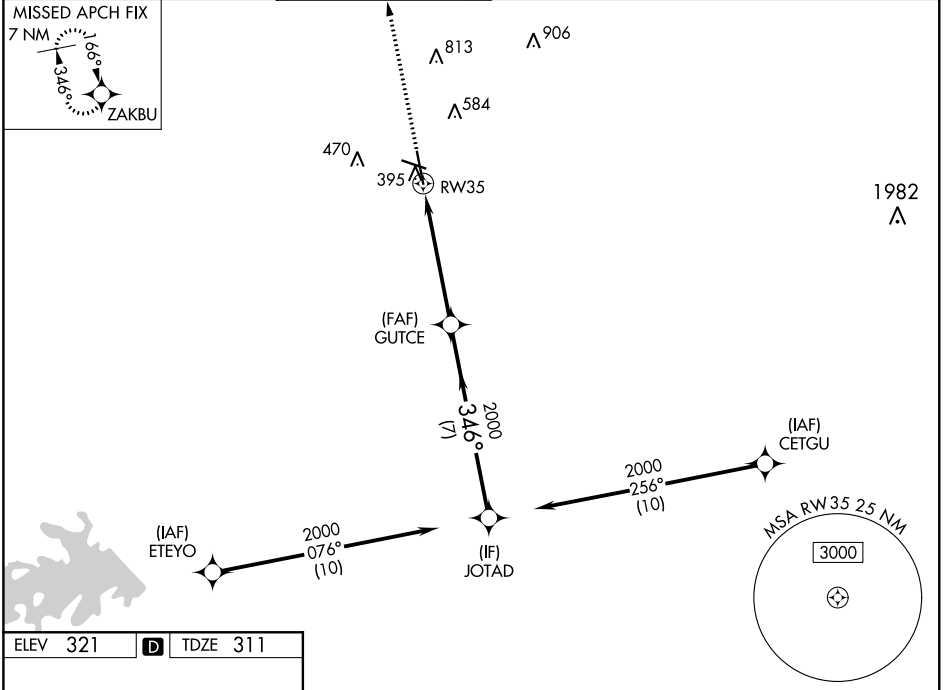


WAAS CH 63122 W35A	APP CRS 346°	Rwy Idg TDZE Apt Elev	7000 311 321
--	------------------------	-----------------------------	---

RNAV (GPS) RWY 35

EASTERWOOD FLD (CLL)

RNP APCH.		EASTERWOOD TOWER ★		GND CON	CLNC DEL	CLNC DEL	UNICOM
<p>▼ For uncompensated Baro-VNAV systems, LNAV/VNAV NA below -3°C or above 54°C. For inop ALS, increase LPV Cat E and LNAV/VNAV all Cats visibility to ¾ SM, increase LNAV Cat E visibility to 1¾ SM.</p>		<p>118.5 (CTAF) 0 284.7</p>		<p>128.7 284.7</p>	<p>128.7</p>	<p>120.4 (when twr closed)</p>	<p>122.95</p>



ELEV 321	D	TDZE 311			
2100	ZAKBU				
*LNAV only.					
1.3 NM	3.9 NM	7 NM			
RW35	GUTCE 2000	JOTAD 2000			
	346°	2000			
		GP 3.00° TCH 55			
CATEGORY	A	B	C	D	E
LPV DA		511-½	200 (200-½)		
LNAV/VNAV DA		563-½	252 (300-½)		
LNAV MDA	760-½	449 (500-½)	760-⅞	449 (500-⅞)	
C CIRCLING	860-1 539 (600-1)	880-1 559 (600-1)	1000-2 679 (700-2)	1180-2¾ 859 (900-2¾)	1180-3 859 (900-3)

SC-5, 08 SEP 2022 to 06 OCT 2022

SC-5, 08 SEP 2022 to 06 OCT 2022