

HI-TACAN Z RWY 32L/R

TACAN NTU Chan 113	APCH CRS 309°	Rwy Idg 32L 8000 32R 8001	TDZE 32L 22 32R 20	AL-934 [USN]	OCEANA NAS (APOLLO SOUCEK FLD) (KNTU)
-----------------------	------------------	---------------------------------	--------------------------	--------------	---------------------------------------

ALSF-1

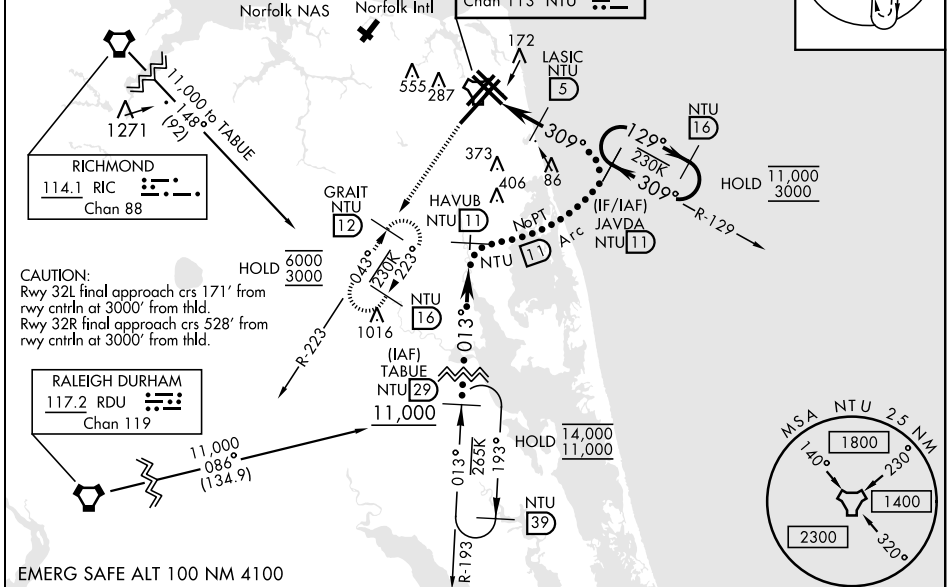
 MISSED APPROACH: Climbing left turn to 3000, intercept NTU TACAN R-223 to GRAIT and hold.

ATIS 317.6	OCEANA APP/DEP CON 123.9 266.8	TOWER 127.075 360.2	GND CON 119.6 336.4	CLNC DEL 254.4	ASR/ PAR
---------------	-----------------------------------	------------------------	------------------------	-------------------	-------------

Knots	60	120	180	240	300	360
V/V(fpm)	220	440	660	880	1100	1320

Min climb of 220 ft/NM to 3000 - Controlling Obstacle Unk

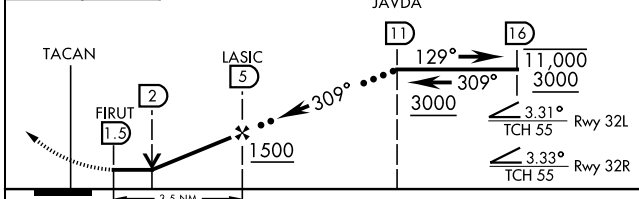
RICHMOND feeder turn exceeds 120°. RADAR or turn in hold required



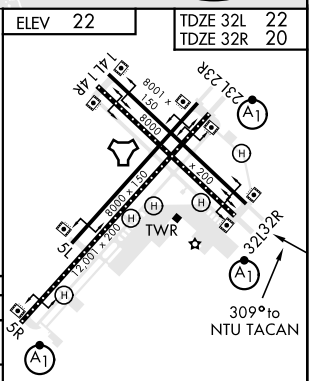
CAUTION:
 Rwy 32L final approach crs 171° from rwy cntrln at 3000' from thld.
 Rwy 32R final approach crs 528° from rwy cntrln at 3000' from thld.

EMERG SAFE ALT 100 NM 4100

3000 NTU R-223	GRAIT NTU 12	ELEV 22	TDZE 32L 22	TDZE 32R 20
----------------	--------------	---------	-------------	-------------



CATEGORY	C	D	E
S-32L*	440-3/4	418 (500-3/4)	
S-32R	440-1 1/8	420 (500-1 1/8)	
CIRCLING	600-1 1/2 578 (600-1 1/2)	600-2 578 (600-2)	900-3 878 (900-3)



HIRL all Rwy
 Wave-Off Lgt all Rwy

HI-TACAN Z RWY 32L/R

NE-3, 08 SEP 2022 to 06 OCT 2022

NE-3, 08 SEP 2022 to 06 OCT 2022