

VIRGINIA BEACH, VIRGINIA

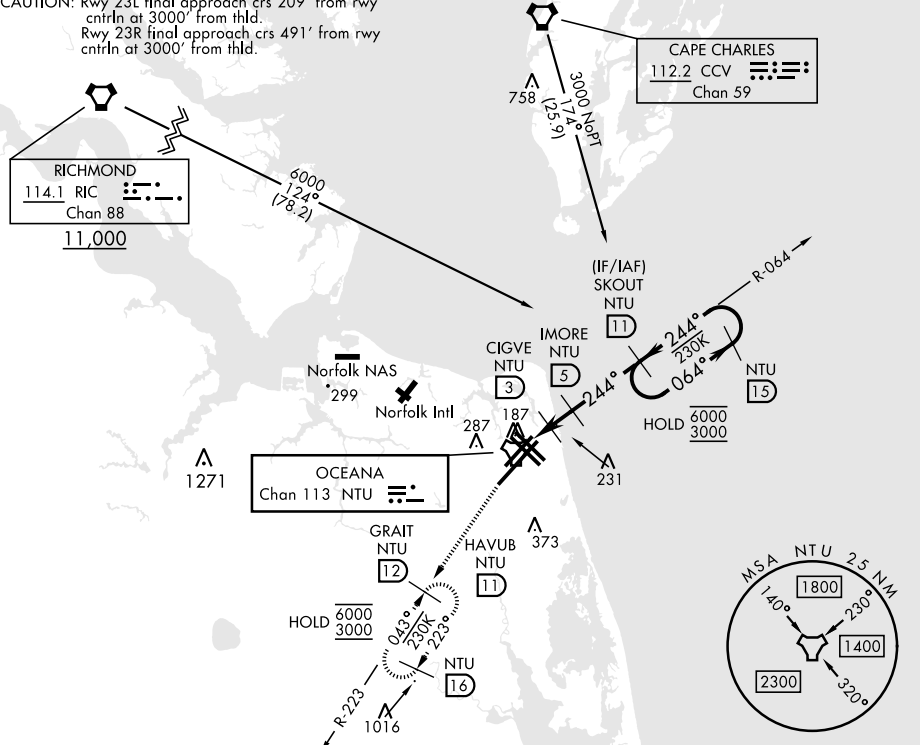
# TACAN Y RWY 23L/R

TACAN NTU Chan <b>113</b>	APCH CRS <b>244°</b>	Rwy ldg 23L <b>12,001</b> 23R <b>8000</b> TDZE 23L <b>21</b> 23R <b>20</b> Arprt Elev <b>22</b>	AL-934 [USN] OCEANA NAS (APOLLO SOUCEK FLD) (KNTU)
------------------------------	-------------------------	---	---

⚠ \* When ALS inop, increase CAT AB vis to 1 mile, CAT CD vis to 1½ miles.
 
 MISSED APPROACH: Climb to 3000 via R-064 to NTU TACAN and via R-223 to GRAIT and hold.

ATIS <b>317.6</b>	OCEANA APP/DEP CON <b>123.9 266.8</b>	TOWER <b>127.075 360.2</b>	GND CON <b>119.6 336.4</b>	CLNC DEL <b>254.4</b>	ASR/ PAR
----------------------	--	-------------------------------	-------------------------------	--------------------------	-------------

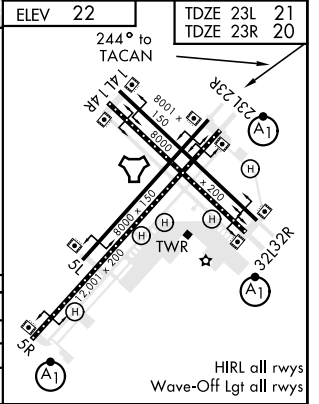
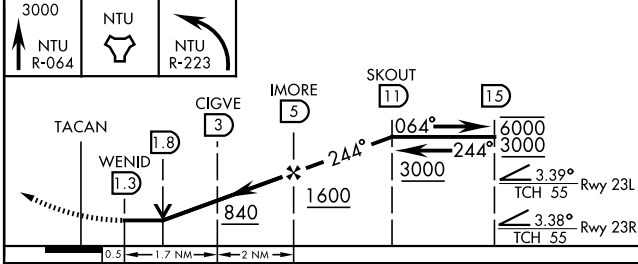
**CAUTION:** Rwy 23L final approach crs 209° from rwy ctrln at 3000' from thld.  
 Rwy 23R final approach crs 491° from rwy ctrln at 3000' from thld.



NE-3, 08 SEP 2022 to 06 OCT 2022

NE-3, 08 SEP 2022 to 06 OCT 2022

EMERG SAFE ALT 100 NM 4100



CATEGORY	A	B	C	D
S-23L *	440-½	419 (500-½)	440-¾	419 (500-¾)
S-23R	440-1	420 (500-1)	440-1⅛	420 (500-1⅛)
<b>CIRCLING</b>	500-1	478 (500-1)	600-1½ 578 (600-1½)	600-2 578 (600-2)

VIRGINIA BEACH, VIRGINIA 36° 49' N-76° 02' W OCEANA NAS (APOLLO SOUCEK FLD) (KNTU)

Orig 27JAN22

# TACAN Y RWY 23L/R

HIRL all rwys  
Wave-Off Lgt all rwys