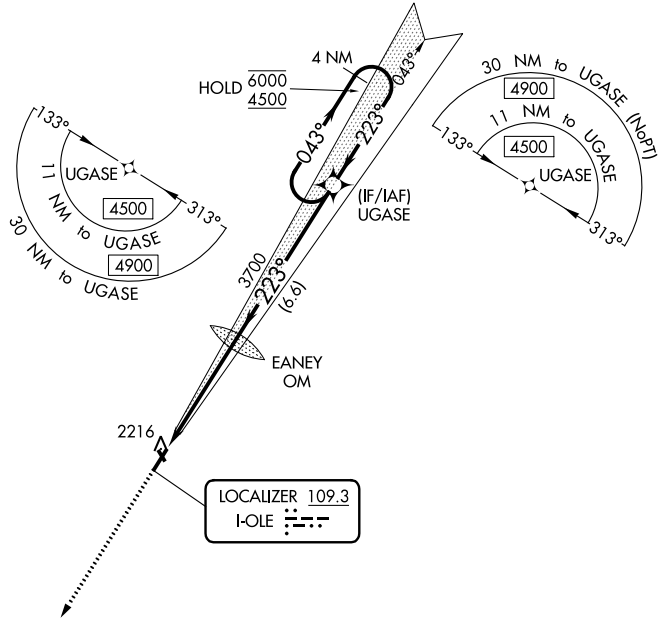


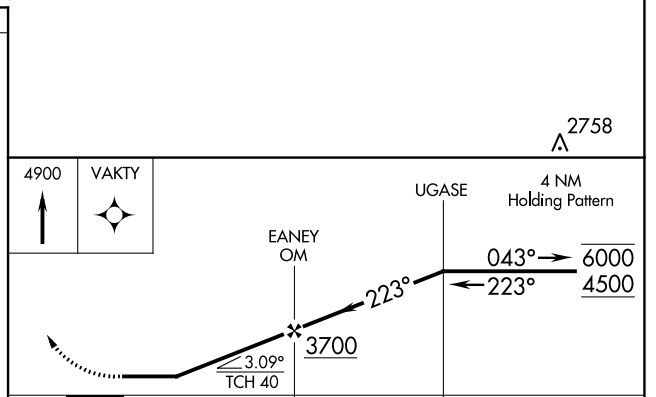
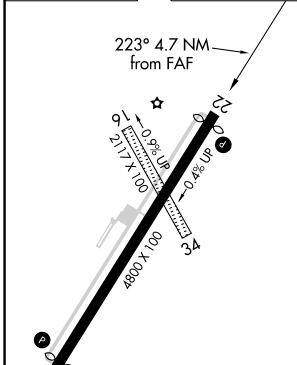
LOC I-OLE <b>109.3</b>	APP CRS <b>223°</b>	Rwy Idg TDZE Apt Elev	<b>4500</b> <b>2132</b> <b>2135</b>
---------------------------	------------------------	-----------------------------	---

**LOC RWY 22**  
CATTARAUGUS COUNTY-OLEAN (OLE)

RNAV 1-GPS required.		MISSED APPROACH: Climb to 4900 direct VAKTY and hold.	
<p><b>▼</b> Circling NA to Rwys 16 and 34.  <b>▲</b> NA When VGSI inop, Straight-in/Circling Rwy 22 procedure NA at night.</p>			
AWOS-3 <b>118.375</b>	CLEVELAND CENTER <b>124.325 353.85</b>	UNICOM <b>122.8 (CTAF) 0</b>	



ELEV	2135	<b>D</b>	TDZE	2132
------	------	----------	------	------



HIRL Rwy 4-22 <b>0</b> REIL Rwys 4 and 22 <b>0</b>		2758 <b>A</b>		
FAF to MAP 4.7 NM		4900 VAKTY <b>0</b>		
		UGASE 4 NM Holding Pattern		
CATEGORY	A	B	C	D
S-LOC 22	2580-1	448 (500-1)	2580-1 <sup>3</sup> / <sub>8</sub>	448 (500-1 <sup>3</sup> / <sub>8</sub> )
<b>0</b> CIRCLING	2620-1	485 (500-1)	2680-1 <sup>1</sup> / <sub>2</sub>	2720-2
			545 (600-1 <sup>1</sup> / <sub>2</sub> )	585 (600-2)

NE-2, 08 SEP 2022 to 06 OCT 2022

NE-2, 08 SEP 2022 to 06 OCT 2022