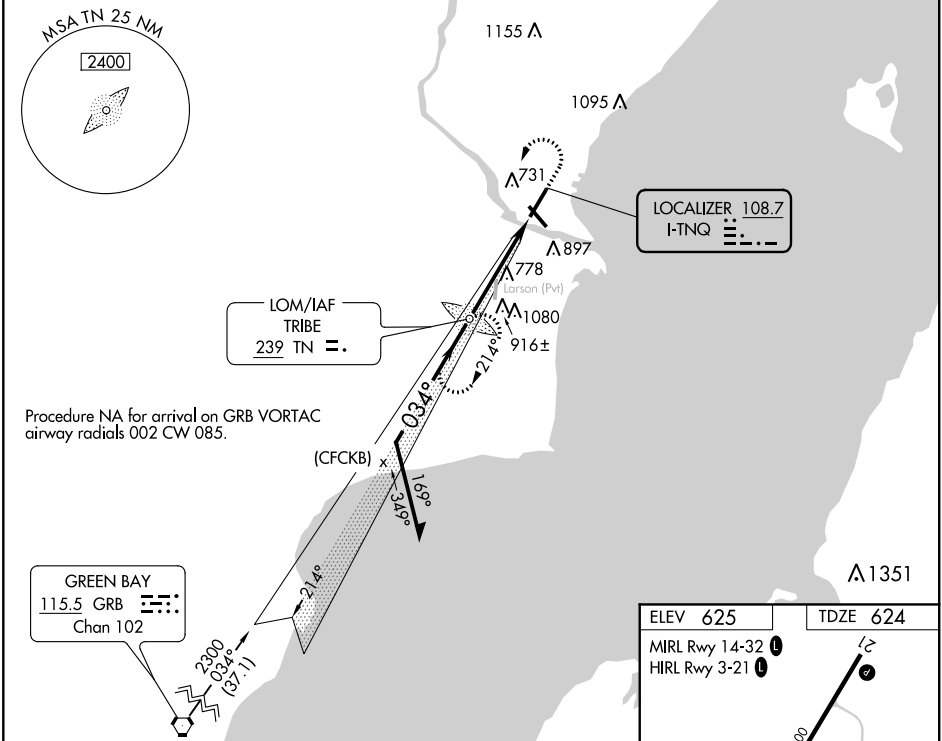


LOC I-TNQ <b>108.7</b>	APP CRS <b>034°</b>	Rwy Idg TDZE Apt Elev <b>5999</b> <b>624</b> <b>625</b>
---------------------------	------------------------	--

# ILS or LOC RWY 3

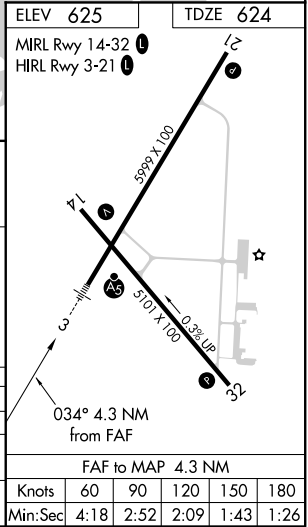
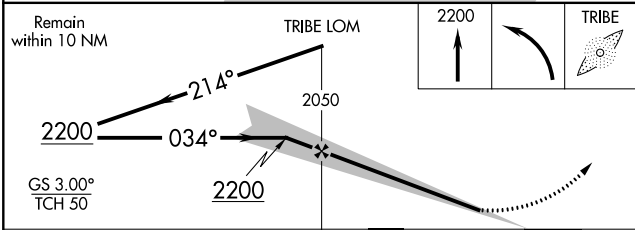
MENOMINEE RGNL (MNFM)

ADF required.		MALSR 	MISSED APPROACH: Climb to 2200 then left turn direct TRIBE LOM and hold.
	Circling Rwy 14, 32 NA at night. Autopilot coupled approach NA below 1574.		
AWOS-3PT <b>121.45</b>		GREEN BAY APP CON* <b>120.3 338.2</b>	UNICOM <b>122.8 (CTAF) 0</b>



Procedure NA for arrival on GRB VORTAC airway radials 002 CW 085.

GREEN BAY  
115.5 GRB  
Chan 102



CATEGORY	A	B	C	D
S-ILS 3		824-1	200 (200-1)	
S-LOC 3		980-1	356 (400-1)	
CIRCLING	1200-1	575 (600-1)	1200-1½ 575 (600-1½)	1380-2½ 755 (800-2½)

FAF to MAP 4.3 NM					
Knots	60	90	120	150	180
Min:Sec	4:18	2:52	2:09	1:43	1:26