

WAAS CH 58016 W31A	APP CRS 308°	Rwy Idg TDZE Apt Elev	5001 1885 1915
--	------------------------	-----------------------------	---

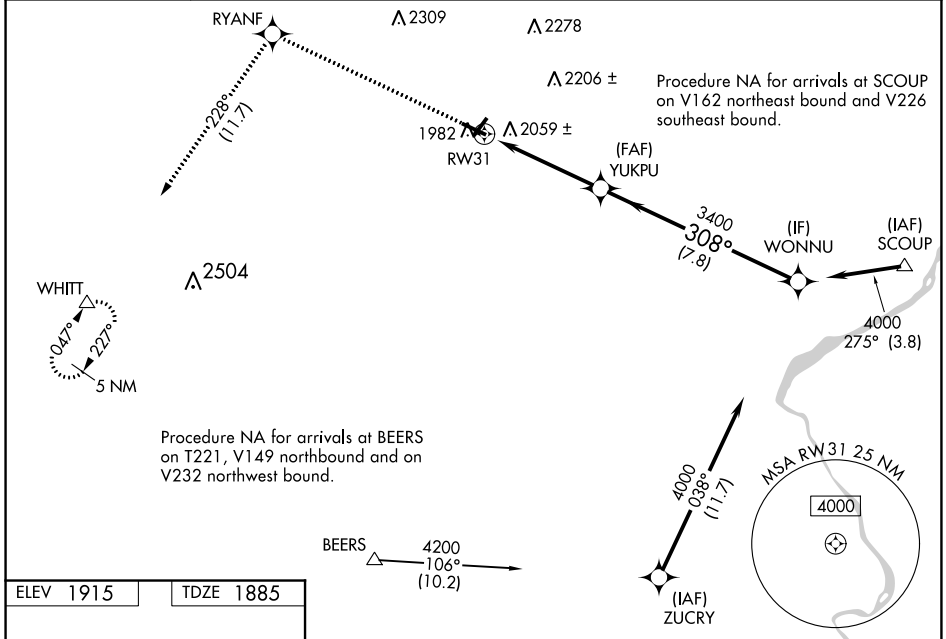
RNAV (GPS) RWY 31

POCONO MOUNTAINS RGNL (MPO)

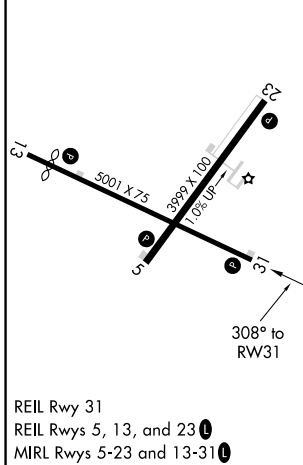
⚠ Baro-VNAV NA when using Wilkes-Barre/Scranton altimeter setting. For uncompensated Baro-VNAV systems, LNAV/VNAV NA below -18°C (0°F) or above 54°C (130°F). Rwy 31 helicopter visibility reduction below 3/4 SM NA. DME/DME RNP-0.3 NA. When local altimeter setting not received, use Wilkes-Barre/Scranton altimeter setting; increase LPV DA to 2403 feet and visibility 1/4 SM, LNAV/VNAV DA to 2446 feet and visibility 3/8 SM; increase all MDAs 180 feet and visibility LNAV Cat C/D 3/8 SM and Circling Cat C/D 1/2 SM. Circling Rwy 23 NA at night.

MISSED APPROACH: Climb to 4200 direct RYANF and on track 228° to WHITT and hold.

ASOS 120.275	WILKES-BARRE APP CON 126.3 256.7	CLNC DEL 125.3	UNICOM 122.7 (CTAF) 0
------------------------	--	--------------------------	---------------------------------



ELEV 1915	TDZE 1885
-----------	-----------



4200	RYANF	WHITT	VGS1 and RNAV glidepath not coincident (VGS1 Angle 3.50/TCH 40).			
↑	✧	△				
	tr 228°					
			GP 3.00° TCH 55			
<table border="1"> <tr> <td>4.6 NM</td> <td>7.8 NM</td> </tr> </table>			4.6 NM	7.8 NM		
4.6 NM	7.8 NM					
CATEGORY	A	B	C	D		
LPV DA	2224-1 1/8		339 (400-1 1/8)			
LNAV/VNAV DA	2267-1 1/4		382 (400-1 1/4)			
LNAV MDA	2320-1	435 (500-1)	2320-1 3/8	435 (500-1 3/8)		
CIRCLING	2420-1	2500-1	2600-2	2660-2 1/2		
	505 (600-1)	585 (600-1)	685 (700-2)	745 (800-2 1/2)		

NE-4, 08 SEP 2022 to 06 OCT 2022

NE-4, 08 SEP 2022 to 06 OCT 2022