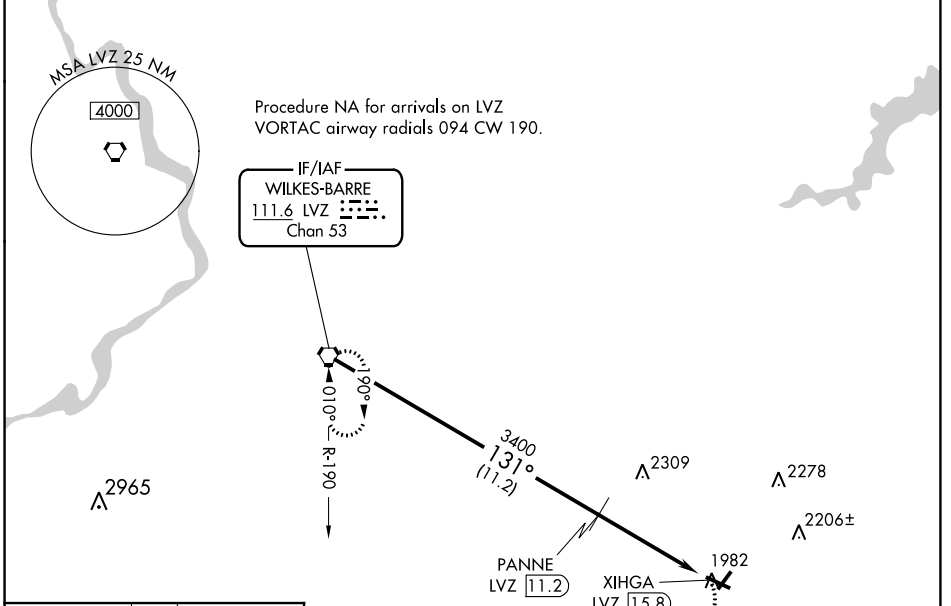


VORTAC LVZ 111.6 Chan 53	APP CRS 131°	Rwy Idg TDZE Apt Elev	4500 1885 1915
---------------------------------------	------------------------	-----------------------------	---

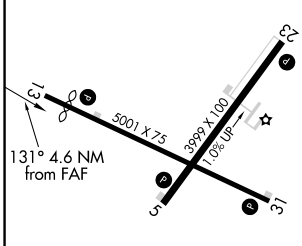
VOR/DME RWY 13

POCONO MOUNTAINS RGNL (MPO)

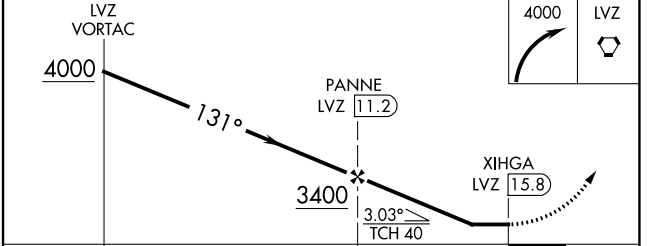
<p>▼ Circling Rwy 23 NA at night. Helicopter visibility reduction below 3/4 SM NA. When local altimeter setting not received, use Wilkes-Barre/Scranton altimeter setting and increase all MDA 180 feet; increase S-13 Cat B and Circling Cat B visibility 1/4 mile, S-13 Cats C/D visibility 3/4 mile, and Circling Cats C/D visibility 1/2 mile.</p> <p>▲ MISSED APPROACH: Climbing right turn to 4000 direct LVZ VORTAC and hold.</p>			
ASOS 120.275	WILKES-BARRE APP CON 126.3 256.7	CLNC DEL 125.3	UNICOM 122.7 (CTAF) 0



ELEV 1915	TDZE 1885
-----------	-----------



REIL Rwy 31	REIL Rws 5, 13, and 23	MIRL Rws 5-23 and 13-31
-------------	------------------------	-------------------------



CATEGORY	A	B	C	D
S-13	2500-1	615 (600-1)	2500-1 3/4	615 (600-1 3/4)
☐ CIRCLING	2500-1	585 (600-1)	2600-2 685 (700-2)	2660-2 1/2 745 (800-2 1/2)

NE-4, 08 SEP 2022 to 06 OCT 2022

NE-4, 08 SEP 2022 to 06 OCT 2022