

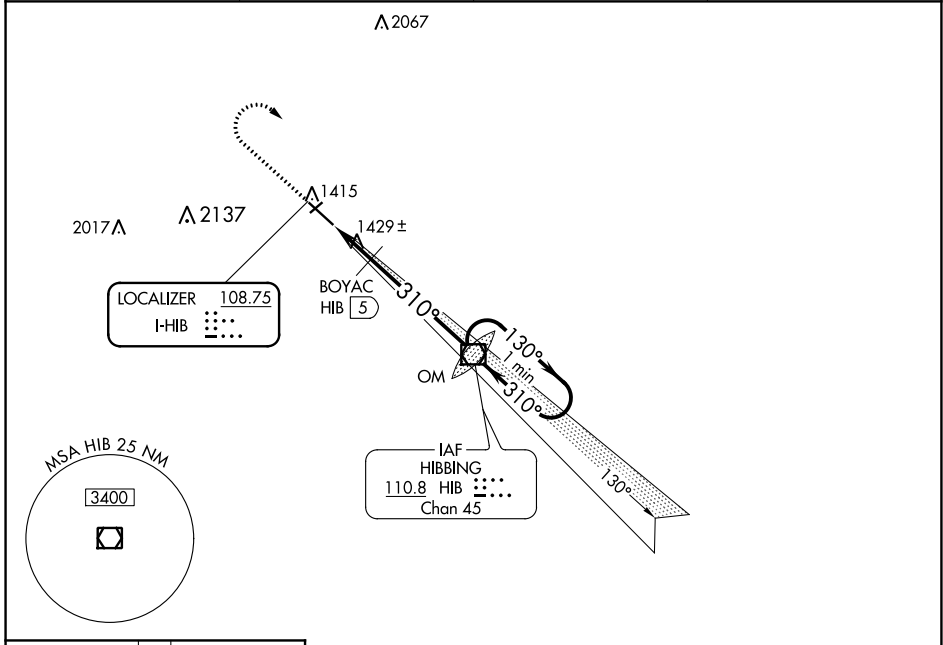
LOC I-HIB <b>108.75</b>	APP CRS <b>310°</b>	Rwy Idg TDZE Apt Elev	<b>6758</b> <b>1343</b> <b>1354</b>
----------------------------	------------------------	-----------------------------	---

# ILS or LOC RWY 31

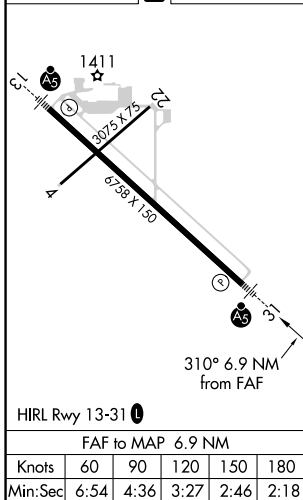
RANGE RGNL (HIB)

<p>▼ For inop MALS, increase BOYAC FIX minimums S-LOC 31 Cat D visibility to 1. # DME from HIB VOR/DME.</p>	<p>MALS</p>	<p>MISSED APPROACH: Climb to 2500 then climbing right turn to 3600 direct HIB VOR/DME and hold.</p>
---	-------------	---

ASOS <b>126.425</b>	DULUTH APP CON <b>125.45 233.7</b>	CLNC DEL <b>127.4</b>	UNICOM <b>123.0 (CTAF) 0</b>
------------------------	---------------------------------------	--------------------------	---------------------------------



ELEV 1354	<b>D</b>	TDZE 1343
-----------	----------	-----------



2500	3600	HIB	HIB VOR/DME OM	One Minute Holding Pattern
			3558	130° → 3600
		BOYAC HIB 5		← 310°
* LOC only	1740*		3600	GS 2.90°
	1.9 NM	5 NM		TCH 60
CATEGORY	A	B	C	D
S-ILS 31	1543-½ 200 (200-½)			
S-LOC 31	1740-½ 397 (400-½)			1740-¾ 397 (400-¾)
CIRCLING	1820-1 466 (500-1)	1840-1 486 (500-1)	1840-1½ 486 (500-1½)	1960-2 606 (700-2)
# BOYAC FIX MINIMUMS				
S-LOC 31	1680-½ 337 (400-½)			1680-¾ 337 (400-¾)
CIRCLING	1820-1 466 (500-1)	1840-1 486 (500-1)	1840-1½ 486 (500-1½)	1960-2 606 (700-2)

NC-1, 08 SEP 2022 to 06 OCT 2022

NC-1, 08 SEP 2022 to 06 OCT 2022