


WAAS CH 69222 W13A	APP CRS 130°	Rwy Idg TDZE 1354 Apt Elev 1354	6758
--	------------------------	---	-------------

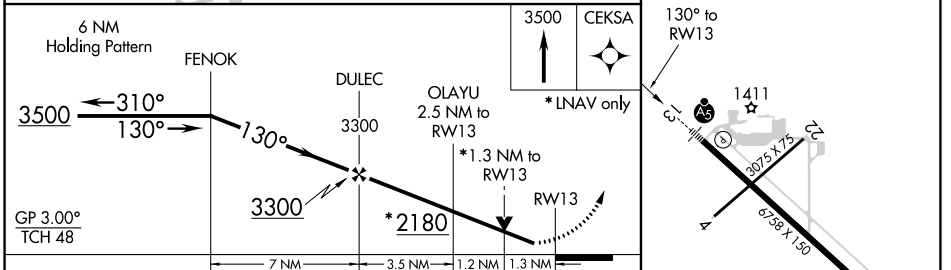
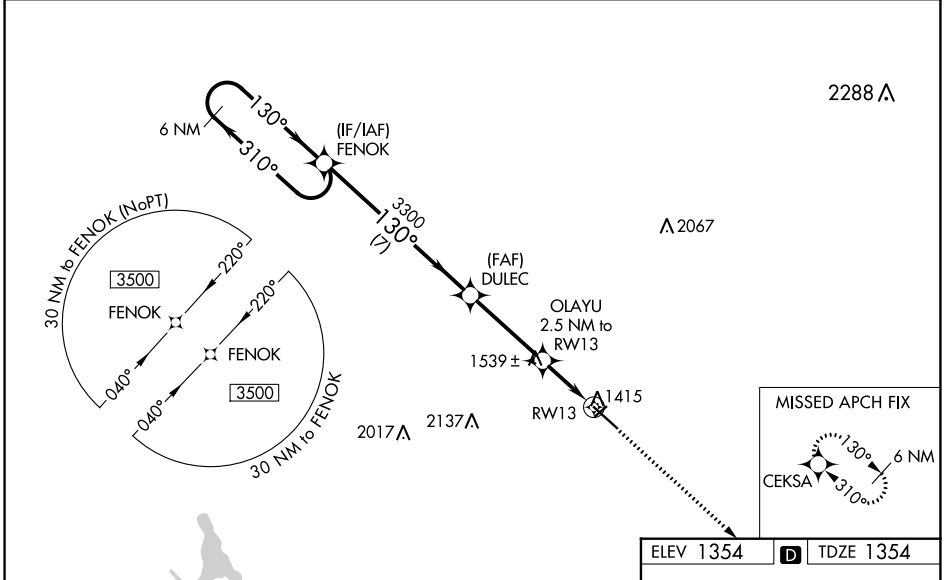
RNAV (GPS) RWY 13

RANGE RGNL (HIB)

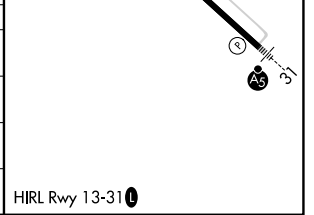
⚠ Circling to Rwy 4 NA at night. DME/DME RNP-0.3 NA. VDP and Baro-VNAV NA when using Eveleth altimeter setting. For uncompensated Baro-VNAV systems, LNAV/VNAV NA below -17°C (2°F) or above 35°C (95°F). Helicopter visibility reduction below ¾ SM NA. When local altimeter setting not received, use Eveleth altimeter setting and increase all DA 36 feet, and all MDA 40 feet, and increase LNAV Cat C/D visibility to 1 mile. Inop table does not apply to LPV and LNAV/VNAV all Cats. For inop MALSRS, increase LNAV Cat A/B visibility to 1 mile. For inop MALSRS when using Eveleth altimeter setting, increase LPV and LNAV/VNAV all Cats visibility to ¾.

MALSRS
 MISSED APPROACH: Climb to 3500 direct CEKSA and hold.

ASOS 126.425	DULUTH APP CON 125.45 233.7	CLNC DEL 127.4	UNICOM 123.0 (CTAF) 0
------------------------	---------------------------------------	--------------------------	---------------------------------



CATEGORY	A	B	C	D
LPV DA		1604-¾	250 (300-¾)	
LNAV/VNAV DA		1614-¾	260 (300-¾)	
LNAV MDA	1800-¾	446 (500-¾)	1800-7/8	446 (500-7/8)
CIRCLING	1820-1 466 (500-1)	1840-1 486 (500-1)	1840-1½ 486 (500-1½)	1960-2 606 (700-2)



NC-1, 08 SEP 2022 to 06 OCT 2022

NC-1, 08 SEP 2022 to 06 OCT 2022