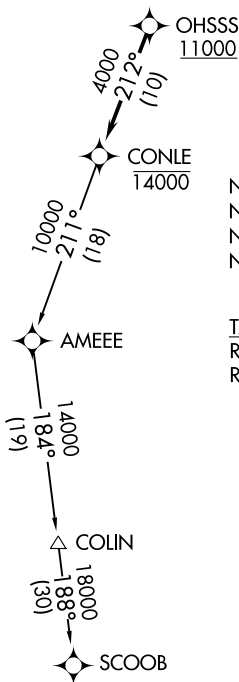


CONLE FOUR DEPARTURE (RNAV)

ATIS
124.925
GND CON
121.8 253.4
MARTIN TOWER ★
121.3 (CTAF) 254.425
UNICOM
122.95
POTOMAC DEP CON
119.7 290.475

**TOP ALTITUDE:
ASSIGNED BY ATC**



NOTE: RNAV 1.
NOTE: DME/DME/IRU or GPS required.
NOTE: RADAR required.
NOTE: For turbojet aircraft only.

TAKEOFF MINIMUMS:
Rwy 15: Standard.
Rwy 33: 300-1³/₈ or standard with minimum climb of 215' per NM to 1100.

NOTE: Chart not to scale.

NE-3, 08 SEP 2022 to 06 OCT 2022

NE-3, 08 SEP 2022 to 06 OCT 2022

DEPARTURE ROUTE DESCRIPTION

Climb on assigned heading to ATC assigned altitude, for vectors to cross OHSSS at or above 11000, then on track 212° to cross CONLE at or below 14000, then on assigned transition. Expect filed altitude within 10 minutes after departure.

COLIN TRANSITION (CONLE4.COLIN)
SCOOB TRANSITION (CONLE4.SCOOB)