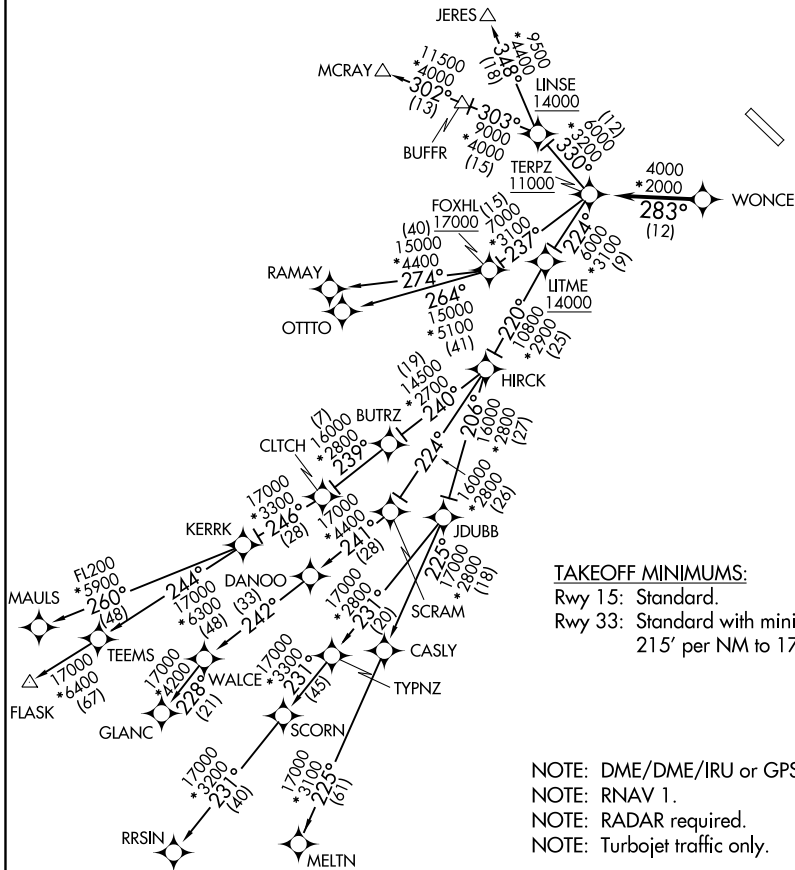


TERPZ SEVEN DEPARTURE (RNAV)

ATIS
 124.925
 GND CON
 121.8 253.4
 MARTIN TOWER ★
 121.3 (CTAF) 254.425
 UNICOM
 122.95
 POTOMAC DEP CON
 119.7 290.475

TOP ALTITUDE:
RAMAY, OTTTO, MAULS, FLASK,
RRSIN, GLANC, MELTN
TRANSITIONS: 17000
JERES, MCRAY TRANSITIONS:
16000



TAKEOFF MINIMUMS:
 Rwy 15: Standard.
 Rwy 33: Standard with minimum climb of 215' per NM to 1700.

NOTE: DME/DME/IRU or GPS required.
 NOTE: RNAV 1.
 NOTE: RADAR required.
 NOTE: Turbojet traffic only.

NE-3, 08 SEP 2022 to 06 OCT 2022

NE-3, 08 SEP 2022 to 06 OCT 2022

NOTE: Chart not to scale.

TERPZ SEVEN DEPARTURE (RNAV)

(TERPZ7.TERPZ) 26MAR20