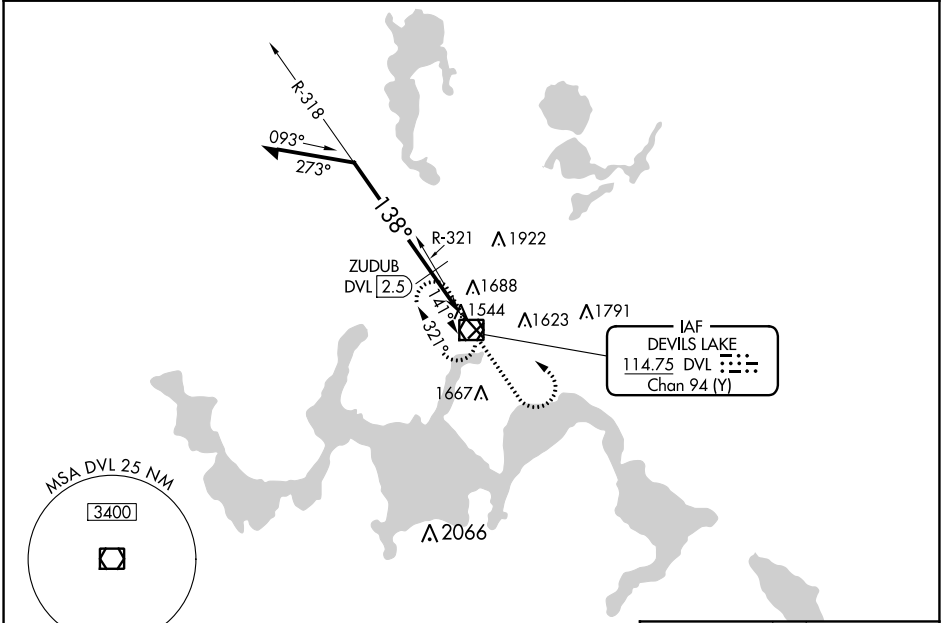


VOR/DME DVL <b>114.75</b> Chan <b>94 (Y)</b>	APP CRS <b>138°</b>	Rwy Idg TDZE Apt Elev	<b>6401</b> <b>1470</b> <b>1470</b>
--	------------------------	-----------------------------	---

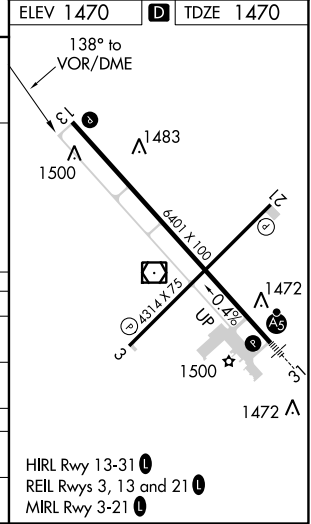
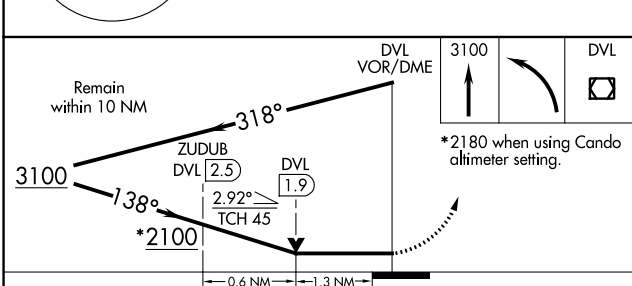
**VOR RWY 13**  
DEVILS LAKE RGNL (DVL)

<p><b>⚠</b> VDP NA with Cando altimeter setting. When local altimeter setting not received, use Cando altimeter setting and increase all MDA 80 feet, and increase S-13 and Circling Cats C and D visibility ¼ mile, increase ZUDUB fix minimums S-13 and Circling Cats C and D visibility ¼ mile.</p>	<p>MISSED APPROACH: Climb to 3100 then left turn direct DVL VOR/DME and hold.</p>	
<p>AWOS-3PT <b>125.875</b></p>	<p>MINNEAPOLIS CENTER <b>124.2 270.3</b></p>	<p>UNICOM <b>122.8 (CTAF) 0</b></p>



NC-1, 08 SEP 2022 to 06 OCT 2022

NC-1, 08 SEP 2022 to 06 OCT 2022



CATEGORY	A	B	C	D
S-13	2100-1	630 (700-1)	2100-1¾	630 (700-1¾)
<b>C</b> CIRCLING	2100-1	630 (700-1)	2240-2¼ 770 (800-2¼)	2240-2½ 770 (800-2½)
ZUDUB FIX MINIMUMS (DME REQUIRED)				
S-13	1940-1	470 (500-1)	1940-1¾	470 (500-1¾)
<b>C</b> CIRCLING	2000-1	530 (600-1)	2240-2¼ 770 (800-2¼)	2240-2½ 770 (800-2½)

ELEV 1470 **D** TDZE 1470

HIRL Rwy 13-31 **0**  
REIL Rwys 3, 13 and 21 **0**  
MIRL Rwy 3-21 **0**

**VOR RWY 13**