

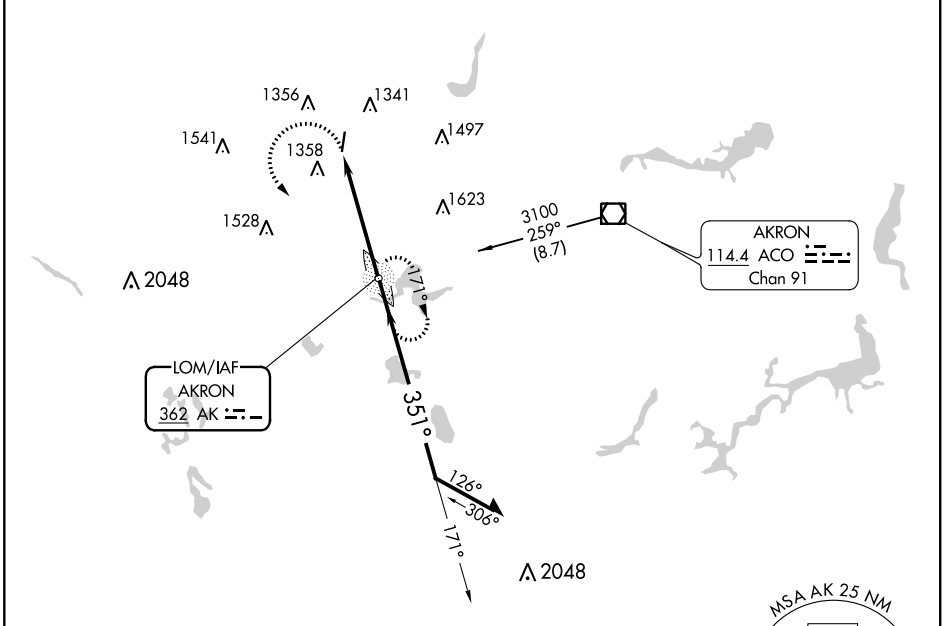
LOM AK 362	APP CRS 351°	Rwy Idg 3947
		TDZE 1129
		Apt Elev 1134

NDB RWY 1

KENT STATE UNIVERSITY (1G3)

NA When local altimeter setting not received, use Akron Fulton Intl altimeter setting.
 MISSED APPROACH: Climbing left turn to 3100 direct AKRON LOM and hold.

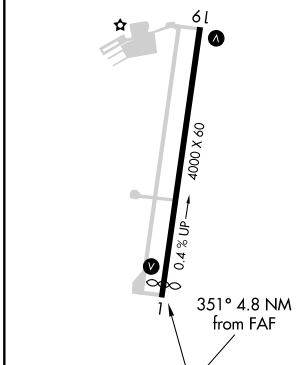
AWOS-2 119.15	AKR ASOS 126.825	CLEVELAND APP CON* 118.6 371.875	CLNC DEL 125.65	UNICOM 122.725 (CTAF)	122.9
-------------------------	----------------------------	--	---------------------------	---------------------------------	--------------



EC-2, 08 SEP 2022 to 06 OCT 2022

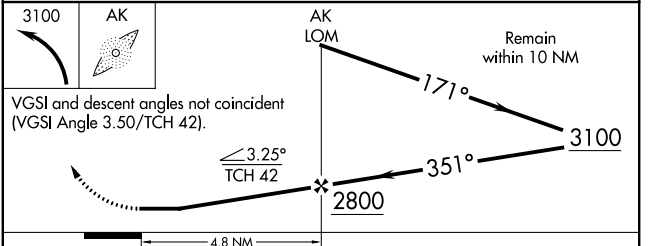
EC-2, 08 SEP 2022 to 06 OCT 2022

ELEV 1134	TDZE 1129
-----------	-----------



MIRL Rwy 1-19
 REL Rwys 1 and 19

FAF to MAP 4.8 NM					
Knots	60	90	120	150	180
Min:Sec	4:48	3:12	2:24	1:55	1:36



CATEGORY	A	B	C	D
S-1	1760-1	631 (700-1)	1760-1 ⁷ / ₈ 631 (700-1 ⁷ / ₈)	NA
CIRCLING	1760-1	626 (700-1)	1760-1 ⁷ / ₈ 626 (700-1 ⁷ / ₈)	NA