

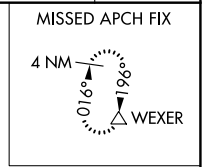
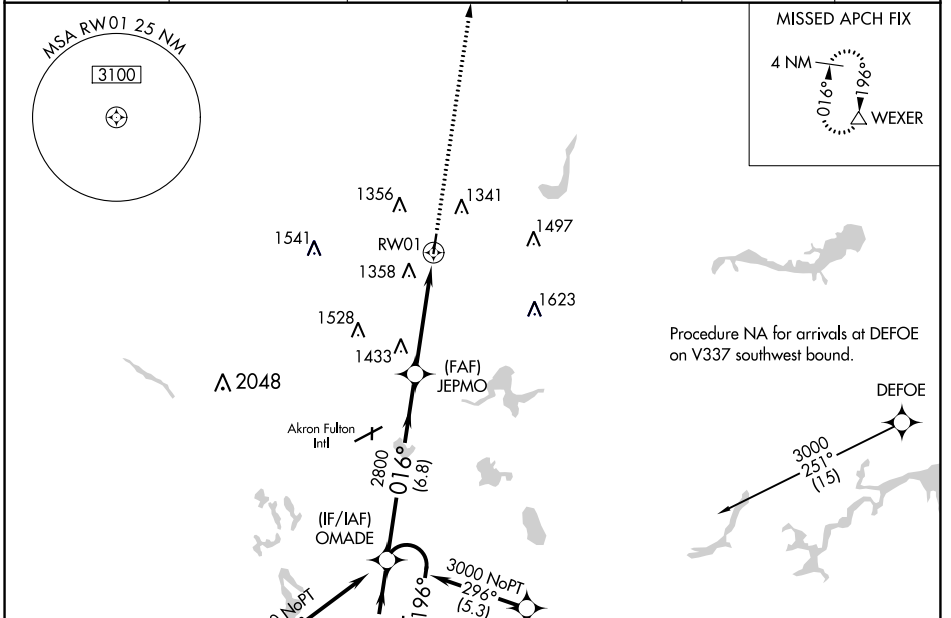
WAAS CH 61001 W01A	APP CRS 016°	Rwy Idg 3947 TDZE 1129 Apt Elev 1134
--	------------------------	---

RNAV (GPS) RWY 1

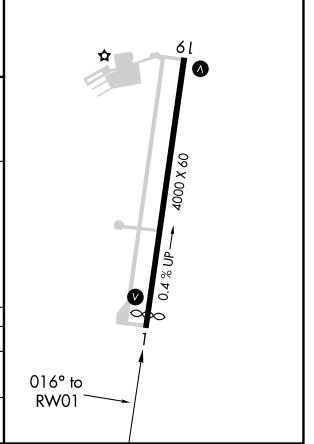
KENT STATE UNIVERSITY (1G3)

RNP APCH - GPS.		MISSED APPROACH: Climb to 3000 direct WEXER and hold.	
NA Rwy 1 helicopter visibility reduction below 3/4 SM NA. When local altimeter setting not received, use Akron Fulton Intl altimeter setting.			

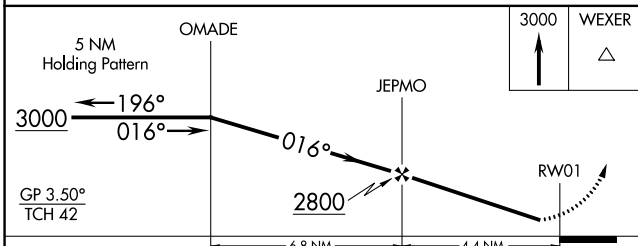
AWOS-2 119.15	AKR ASOS 126.825	CLEVELAND APP CON * 118.6 371.875	CLNC DEL 125.65	UNICOM 122.725 (CTAF)	122.9
-------------------------	----------------------------	---	---------------------------	---------------------------------	--------------



ELEV 1134	TDZE 1129
MIRL Rwy 1-19	REIL Rws 1 and 19



Procedure NA for arrivals at JOSEF on V72 southwest bound.



CATEGORY	A	B	C	D
LPV DA	1499-1 370 (400-1)			NA
LNAV MDA	1760-1	631 (700-1)	1760-1 3/4 631 (700-1 3/4)	NA

EC-2, 08 SEP 2022 to 06 OCT 2022

EC-2, 08 SEP 2022 to 06 OCT 2022