


LOC/DME I-HTY 108.5 Chan 22	APP CRS 205°	Rwy ldg TDZE Apt Elev	5002 1216 1216
---	------------------------	-----------------------------	---

ILS or LOC RWY 21

SAWYER COUNTY (HYR)

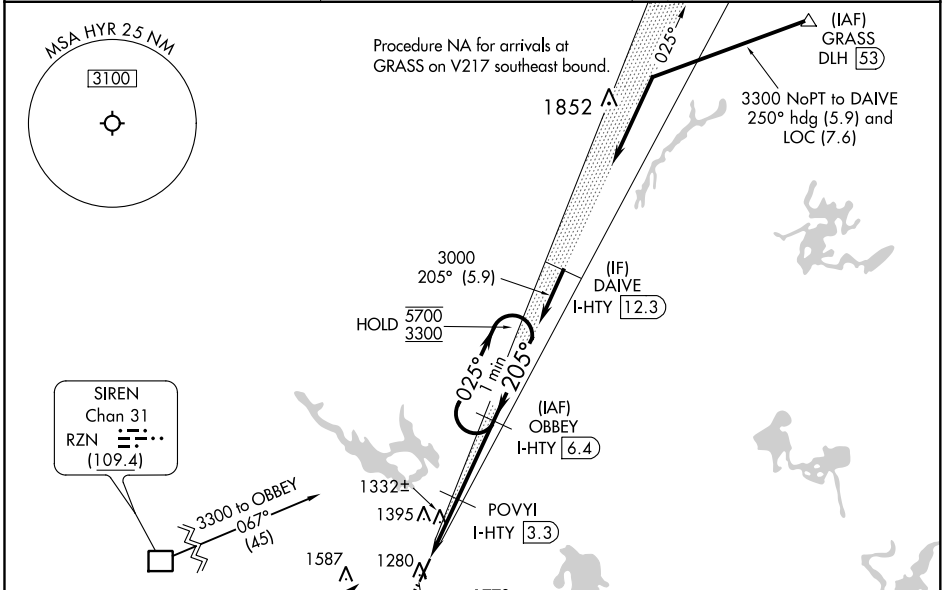
From RZN DME: RNAV 1-GPS required.
DME required.

MALS 

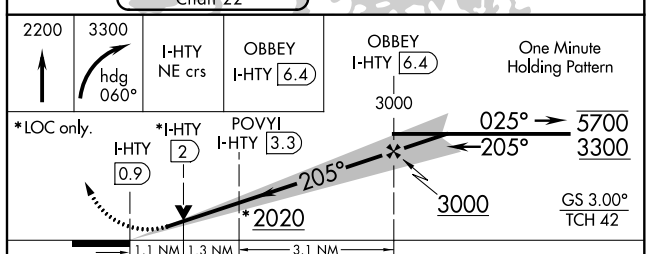
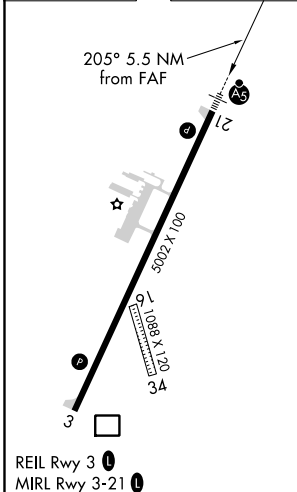
MISSED APPROACH: Climb to 2200 then climbing right turn to 3300 on heading 060° and I-HTY northeast course to OBBEY/ I-HTY 6.4 DME and hold.


NA Circling NA to Rws 16 and 34. Rwy 21 helicopter visibility reduction below ¼ SM NA. For inop ALS, increase S-ILS 21 all Cats visibility to ½ SM, increase LOC Cat A/B visibility to 1 SM, Cat C/D to 1½ SM.

ASOS 118.4	MINNEAPOLIS CENTER 126.45 276.4	UNICOM 122.8 (CTAF) 
----------------------	---	---



ELEV 1216	TDZE 1216
-----------	-----------



CATEGORY	A	B	C	D
S-ILS 21		1518-¾	302 (400-¾)	
S-LOC 21		1600-¾	384 (400-¾)	
 CIRCLING	1860-1 644 (700-1)	2060-1¼ 844 (900-1¼)	2120-2¾ 904 (1000-2¾)	2120-3 904 (1000-3)

EC-3, 08 SEP 2022 to 06 OCT 2022

EC-3, 08 SEP 2022 to 06 OCT 2022