

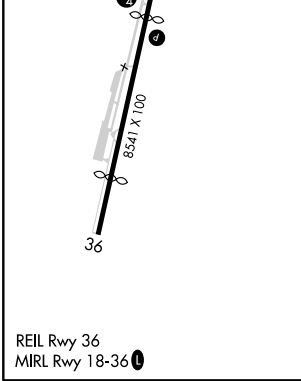
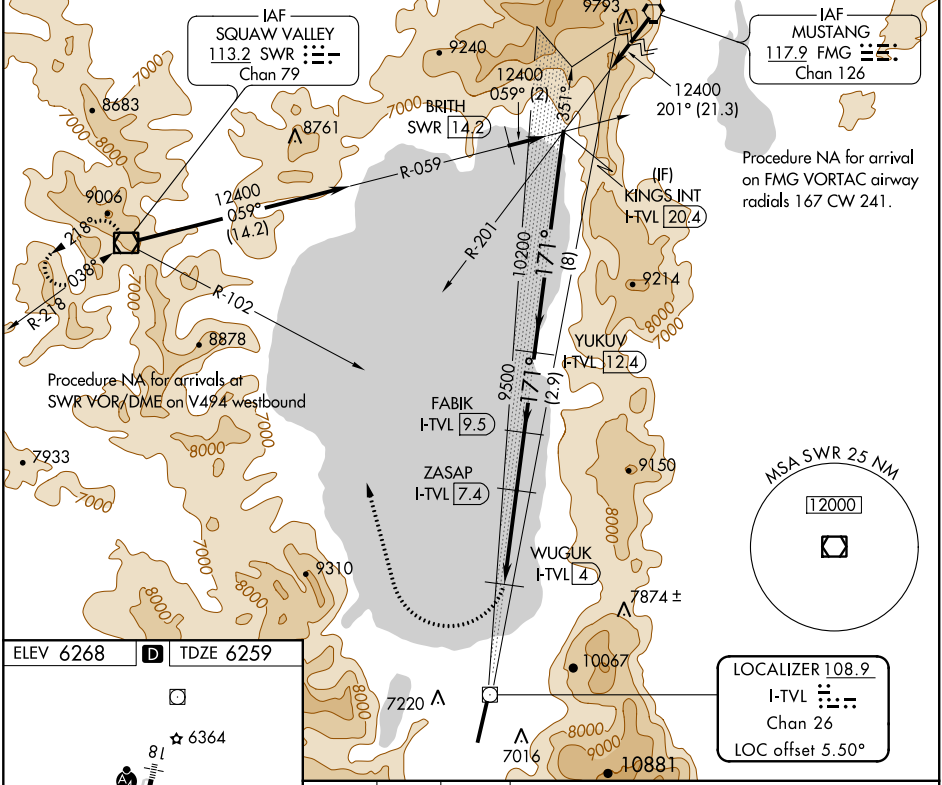
LOC/DME I-TVL <b>108.9</b> Chan 26	APP CRS <b>171°</b>	Rwy Idg TDZE <b>6259</b> Apt Elev <b>6268</b>
--	------------------------	---

# LDA RWY 18

LAKE TAHOE (TVL)

DME required.	MALSF	MISSED APPROACH: Climbing right turn to 11000 on heading 329° and SWR VOR/DME R-102 to SWR VOR/DME and hold.
<p>▼ NA Rwy 18 helicopter visibility reduction below 3/4 SM NA. When local altimeter setting not received, procedure NA.</p> <p>⚠ -13°C</p>		

ASOS <b>124.725</b>	OAKLAND CENTER <b>127.95 316.1</b>	CLNC DEL <b>134.3</b>	CTAF <b>122.85</b>
------------------------	---------------------------------------	--------------------------	-----------------------



11000	SWR R-102	SWR	YUKUV I-TVL 12.4	KINGS INT I-TVL 20.4
10200			FABIK I-TVL 9.5	
9500			ZASAP I-TVL 7.4	
8800			WUGUK I-TVL 4	
8541				
36				
4.4 NM	3.4 NM	2.1 NM	2.9 NM	8 NM
CATEGORY	A	B	C	D
S-18	7160-5 901 (900-5)			8520-5 2261 (2300-5)

SW-2, 08 SEP 2022 to 06 OCT 2022

SW-2, 08 SEP 2022 to 06 OCT 2022