

APP CRS	Rwy Idg	<b>6275</b>
<b>017°</b>	TDZE	<b>2442</b>
	Apt Elev	<b>2457</b>

# RNAV (GPS) RWY 2

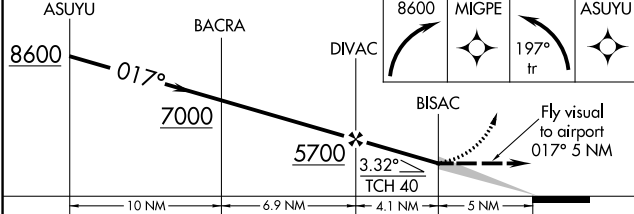
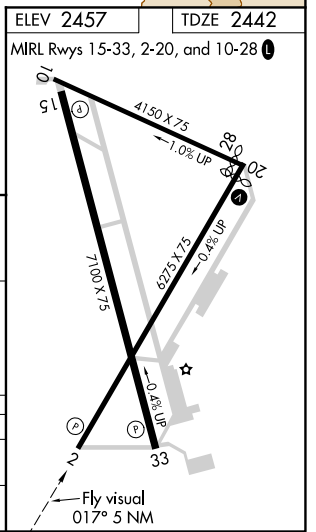
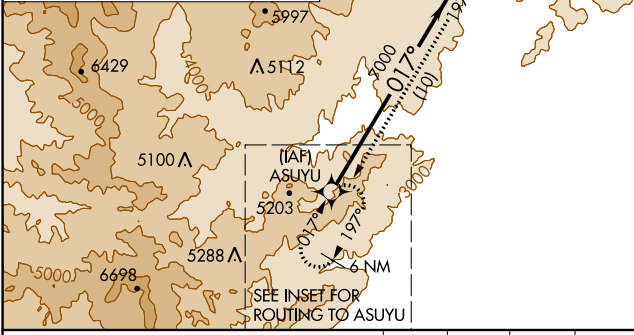
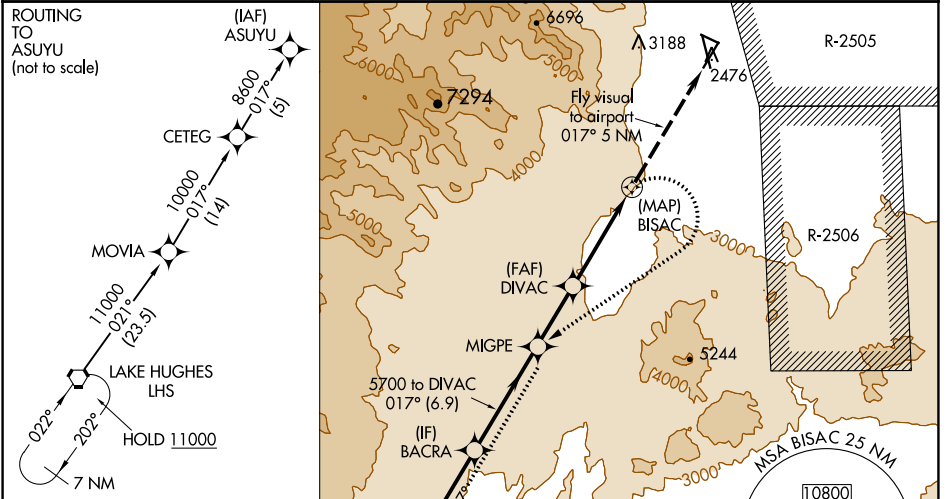
INYOKERN (IYK)

RNP APCH.

**NA** Circling Rwy 10, 33 NA at night. Circling NA east of Rwy 15-33. Circling NA at night west of Rwy 2 and 15. Except for operators with approved weather reporting service, use Mojavave altimeter setting, if not available, procedure NA.

MISSED APPROACH: (Do not exceed 165K until SW bound) Climbing right turn to 8600 direct MIGPE then left turn on track 197° to ASUYU and hold.

MHV AWOS-3 <b>132.225</b>	JOSHUA APP CON <b>133.65 348.7</b>	AUNICOM <b>122.8 (CTAF) 0</b>
------------------------------	---------------------------------------	----------------------------------



CATEGORY	A	B	C	D
LNVA MDA	4200-3 1758 (1800-3)			
CIRCLING	4200-3 1743 (1800-3)	4780-3 2323 (2400-3)	5640-3 3183 (3200-3)	

SW-3, 08 SEP 2022 to 06 OCT 2022

SW-3, 08 SEP 2022 to 06 OCT 2022