

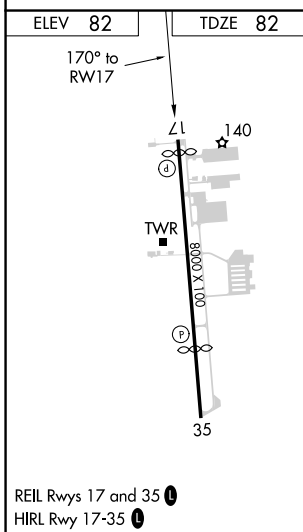
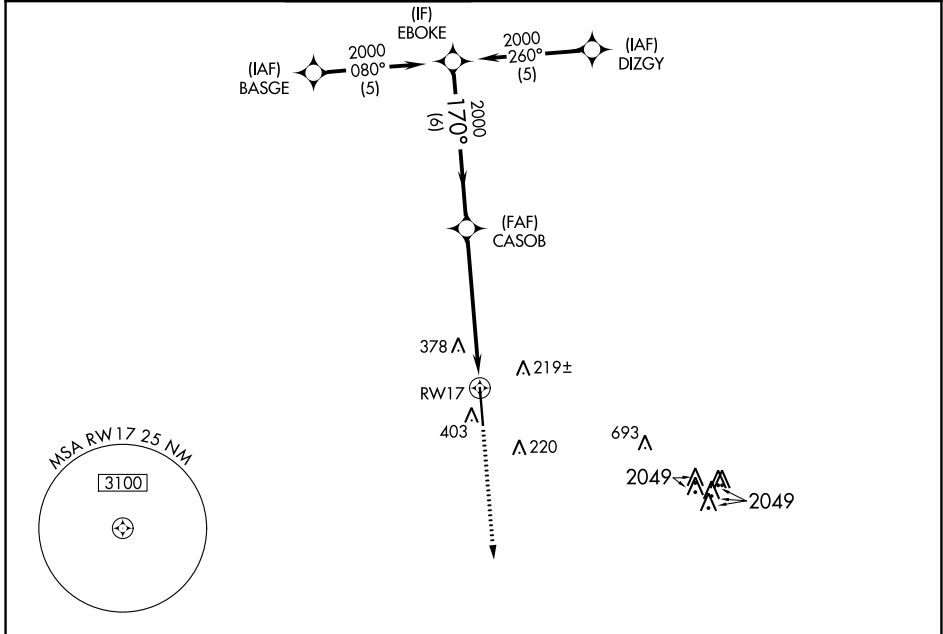
WAAS CH 82513 W17A	APP CRS 170°	Rwy Idg TDZE Apt Elev	7620 82 82
--	------------------------	-----------------------------	---------------------------------------

RNAV (GPS) RWY 17

SUGAR LAND RGNL (SGR)

RNP APCH.	MISSED APPROACH: Climb to 2000 direct POPAM and hold.
<p>▼ Rwy 17 helicopter visibility reduction below 3/4 SM NA. For uncompensated Baro-VNAV systems, LNAV/VNAV NA below -1.5°C or above 54°C.</p>	

ATIS★ 118.125	HOUSTON APP CON 123.8 257.7	SUGAR LAND TOWER★ 118.65 (CTAF) 0	GND CON 121.4	CLNC DEL 121.4	CLNC DEL 119.25 (when twr closed)	UNICOM 122.95
-------------------------	---------------------------------------	--	-------------------------	--------------------------	--	-------------------------



POPAM

VGSI and RNAV glidepath not coincident (VGSI Angle 3.5/TCH 52).

EBOKE	CASOB	POPAM		
2000	2000	2000		
GP 3.00° TCH 52	170°	*1.4 NM to RWY 17		
6 NM	4.4 NM	1.4		
2000	2000	RWY 17		
*LNAV only.				
CATEGORY	A	B	C	D
LPV DA	398-1 316 (400-1)			
LNAV/VNAV DA	704-2 622 (700-2)			
LNAV MDA	640-1 558 (600-1)		640-1 5/8 558 (600-1 5/8)	
CIRCLING	720-1 638 (700-1)		720-2 638 (700-1 3/4) 720-2 638 (700-2)	

SC-5, 08 SEP 2022 to 06 OCT 2022

SC-5, 08 SEP 2022 to 06 OCT 2022