

WAAS CH <b>42806</b> <b>W18A</b>	APP CRS <b>177°</b>	Rwy Idg TDZE Apt Elev	<b>5500</b> <b>1241</b> <b>1245</b>
--	------------------------	-----------------------------	---

# RNAV (GPS) RWY 18

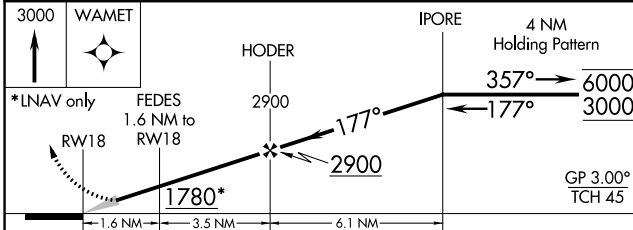
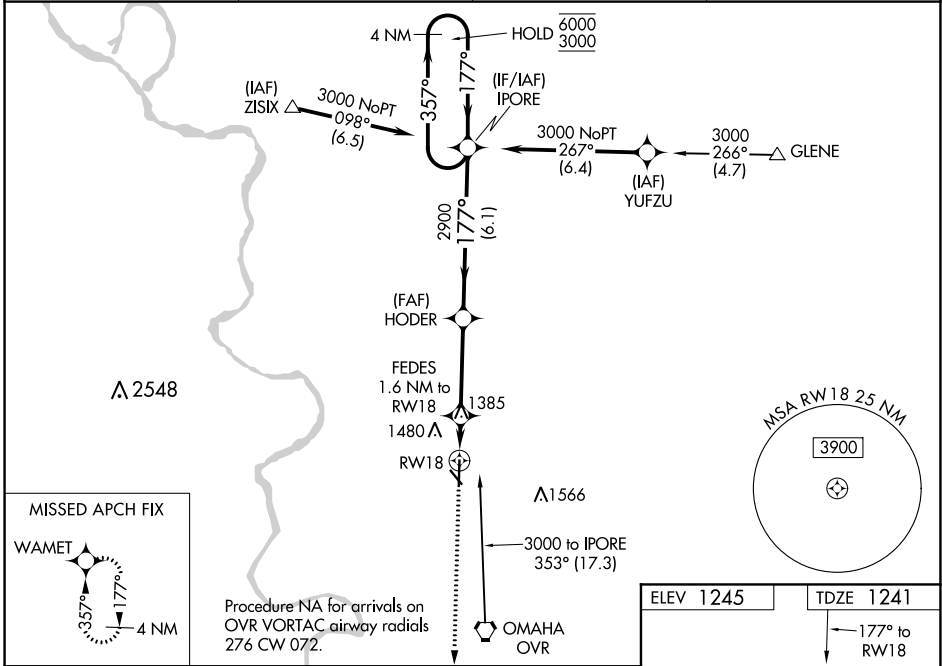
COUNCIL BLUFFS MUNI (CBF)

RNP APCH.

**⚠** Baro-VNAV NA when using Eppley Airfield altimeter setting. For uncompensated Baro-VNAV systems, LNAV/VNAV NA below -17°C or above 54°C. When local altimeter setting not received, use Eppley Airfield altimeter setting and increase LPV DA to 1544 feet, LNAV/VNAV DA to 1750 feet and all MDA 60 feet and increase LPV all Cats visibility ½ SM, LNAV Cat C and D and Circling Cat C and D visibility ½ SM.

MISSED APPROACH: Climb to 3000 direct WAMET and hold.

AWOS-3 <b>126.575</b>	OMAHA APP CON <b>124.5 263.0</b>	CLNC DEL <b>127.675</b>	UNICOM <b>122.725</b> (CTAF) <b>📻</b>
--------------------------	-------------------------------------	----------------------------	--



ELEV 1245	TDZE 1241
-----------	-----------

177° to RWY 18

MIRL Rwy 14-32 **📻**  
HIRL Rwy 18-36 **📻**  
REIL Rwys 14, 32, 18, and 36 **📻**

CATEGORY	A	B	C	D
LPV DA		1491-¾	250 (300-¾)	
LNAV/VNAV DA		1697-1⅜	456 (500-1⅝)	
LNAV MDA	1640-1	399 (400-1)	1640-1⅛	399 (400-1⅞)
<b>📻</b> CIRCLING	1780-1 535 (600-1)	1840-1 595 (600-1)	1840-1½ 595 (600-1½)	1880-2 635 (700-2)

NC-3, 08 SEP 2022 to 06 OCT 2022

NC-3, 08 SEP 2022 to 06 OCT 2022