

LOC I-LWB 110.35	APP CRS 045°	Rwy Idg 7003
		TDZE 2288
		Apt Elev 2302


ILS or LOC RWY 4

GREENBRIER VALLEY (LWB)

RNAV 1-GPS required.
ADF or DME required for LOC only.

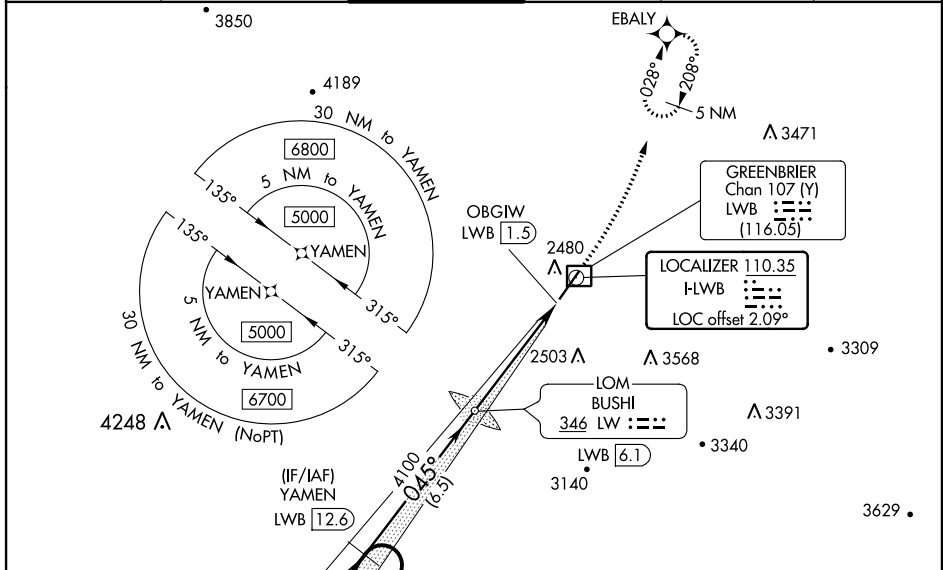
⚠ Autopilot coupled approach NA below 2700. Rwy 4 helicopter visibility reduction below $\frac{3}{4}$ SM NA. For inop ALS increase S-ILS 4 all Cats visibility to $\frac{7}{8}$ SM, increase S-LOC 4 Cats A/B to $1\frac{1}{8}$ SM.

MALSR



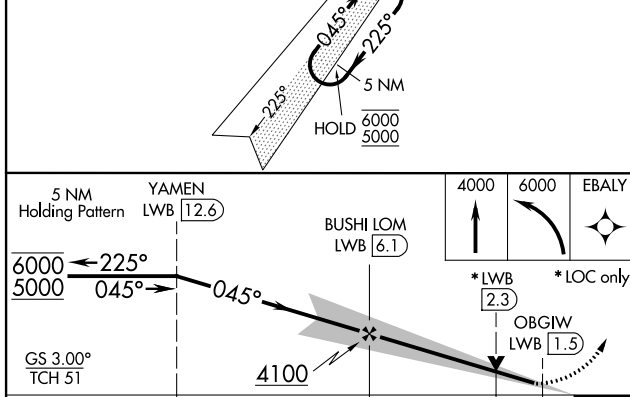
MISSED APPROACH: Climb to 4000 then climbing left turn to 6000 direct EBALY and hold, continue climb-in-hold to 6000.

ATIS ★ 121.4	WASHINGTON CENTER 134.4 353.9	LEWISBURG TOWER★ 118.9 (CTAF) 0	GND CON 121.9	CLNC DEL 120.85 (When tower closed)	UNICOM 122.95
------------------------	---	---	-------------------------	--	-------------------------



NE-4, 08 SEP 2022 to 06 OCT 2022

NE-4, 08 SEP 2022 to 06 OCT 2022



ELEV 2302	D	TDZE 2288
-----------	----------	-----------

TWR 2357, 7003 X 150, 045° 5 NM from FAF, REIL Rwy 22, HIRL Rwy 4-22.

FAF to MAP 5 NM					
Knots	60	90	120	150	180
Min:Sec	5:00	3:20	2:30	2:00	1:40

CATEGORY	A	B	C	D
S-ILS 4		2559- $\frac{3}{4}$	271 (300- $\frac{3}{4}$)	
S-LOC 4		2720- $\frac{3}{4}$	432 (500- $\frac{3}{4}$)	
C CIRCLING	2840-1 538 (600-1)	3040-1 738 (800-1)	3280-3 978 (1000-3)	3680-3 1378 (1400-3)