

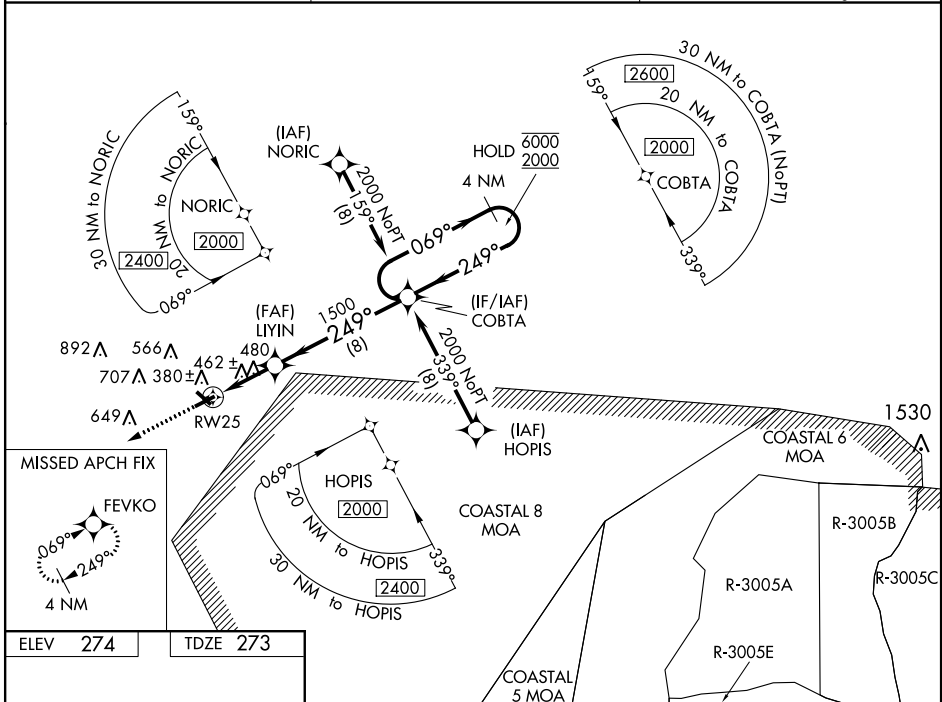
# RNAV (GPS) RWY 25

VIDALIA RGNL (VDI)

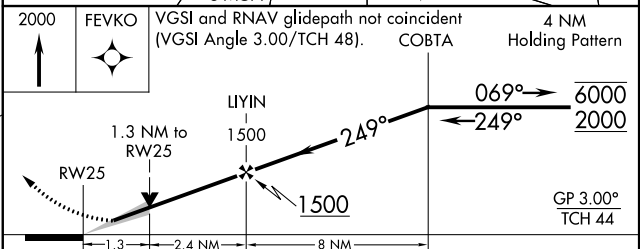
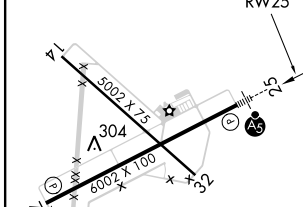
WAAS CH <b>69609</b> <b>W25A</b>	APP CRS <b>249°</b>	Rwy Idg TDZE Apt Elev	<b>6002</b> <b>273</b> <b>274</b>
--	------------------------	-----------------------------	---

RNP APCH - GPS.	MALSR 	MISSED APPROACH: Climb to 2000 direct FEVKO and hold.
-----------------	-----------	---

AWOS-3 <b>119.925</b>	JACKSONVILLE CENTER <b>127.575 269.025</b>	UNICOM <b>122.8 (CTAF)</b>
--------------------------	---	-------------------------------



ELEV 274	TDZE 273
----------	----------



CATEGORY	A	B	C	D
LPV DA	473-½		200 (200-½)	
LNAV/VNAV DA	584-½		311 (400-½)	
LNAV MDA	740-½ 467 (500-½)		740-1 467 (500-1)	
CIRCLING	740-1 466 (500-1)		920-1¾ 1060-2½ 646 (700-1¾) 786 (800-2½)	

HIRL Rwy 7-25  
REIL Rwy 7 and 25

# VIDALIA RGNL (VDI) RNAV (GPS) RWY 25

SE-4, 08 SEP 2022 to 06 OCT 2022

SE-4, 08 SEP 2022 to 06 OCT 2022