

WAAS CH <b>72713</b> <b>W27A</b>	APP CRS <b>268°</b>	Rwy Idg TDZE Apt Elev	<b>5100</b> <b>925</b> <b>926</b>
--	------------------------	-----------------------------	---

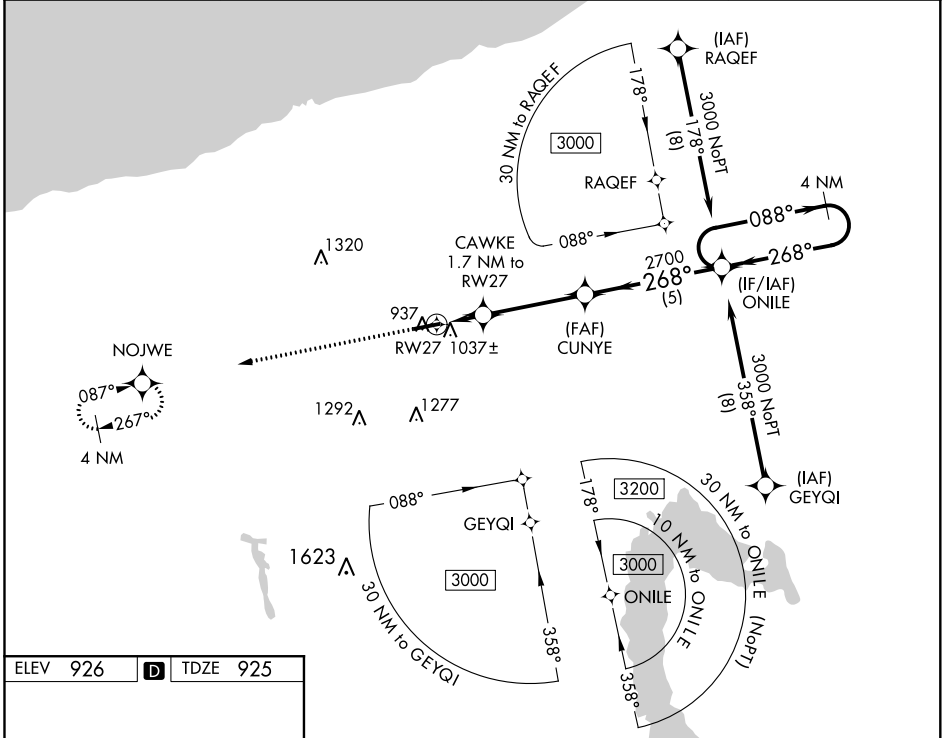
# RNAV (GPS) RWY 27

NORTHEAST OHIO RGNL (HZY)

**▽** For uncompensated Baro-VNAV systems, LNAV/VNAV NA below -21°C (-5°F) or above 54°C (130°F). DME/DME RNP-0.3 NA.

MISSED APPROACH: Climb to 2800 direct NOJWE and hold.

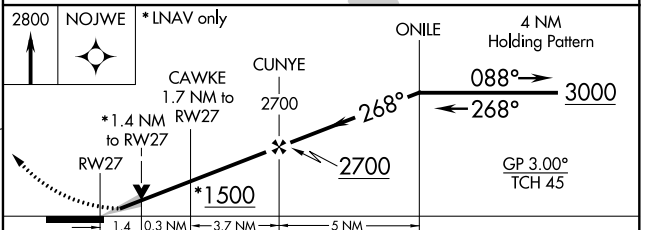
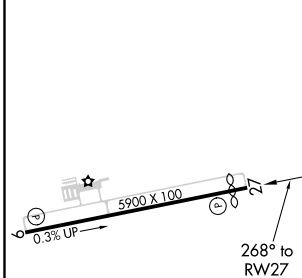
ASOS <b>118.325</b>	BUFFALO APP CON * <b>121.0</b>	UNICOM <b>122.8</b> (CTAF)	<b>123.3</b> <b>0</b>
------------------------	-----------------------------------	-------------------------------	-----------------------



EC-2, 08 SEP 2022 to 06 OCT 2022

EC-2, 08 SEP 2022 to 06 OCT 2022

ELEV 926	<b>D</b>	TDZE 925
----------	----------	----------



CATEGORY	A	B	C	D
LPV DA		1184-7/8	259 (300-7/8)	
LNAV/VNAV DA		1198-7/8	273 (300-7/8)	
LNAV MDA		1300-1	375 (400-1)	
CIRCLING	1340-1 414 (500-1)	1380-1 454 (500-1)	1500-1 1/2 574 (600-1 1/2)	1580-2 654 (700-2)

REIL Rwy 9 and 27 **0**  
HIRL Rwy 9-27 **0**