

APP CRS	Rwy Idg	2745
167°	TDZE	1165
	Apt Elev	1165

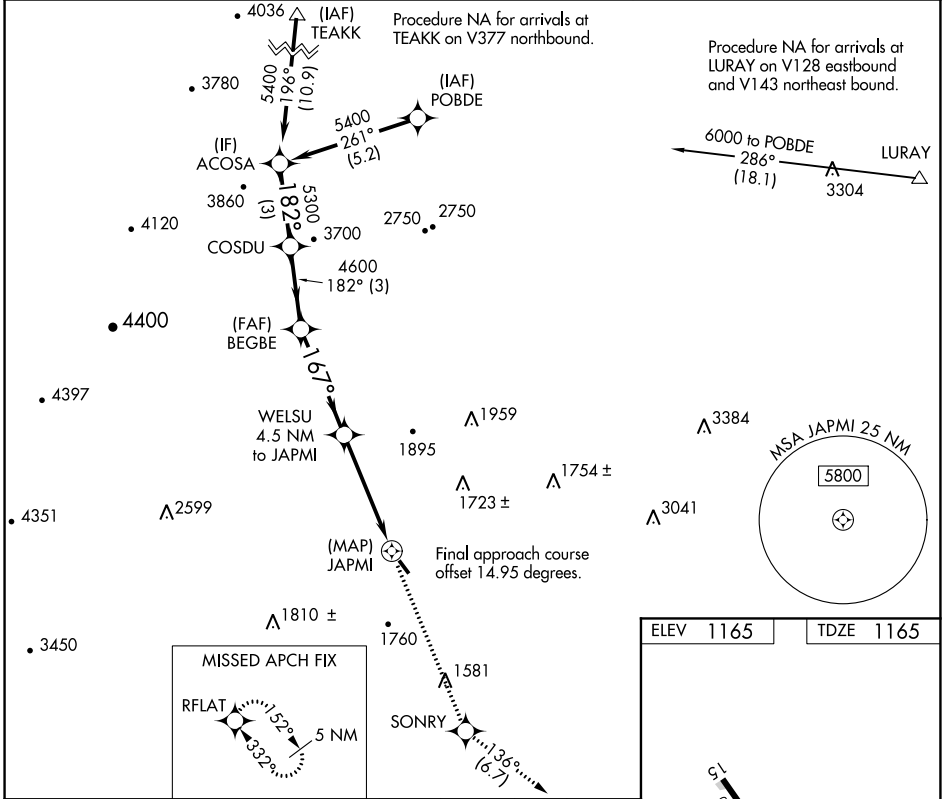
RNAV (GPS) RWY 15

BRIDGEWATER AIR PARK (VBW)

NA DME/DME RNP-0.3 NA. Helicopter visibility reduction below 3/4 SM NA. When local altimeter setting not received, use Staunton/Waynesboro/Harrisonburg altimeter setting and increase all MDA 40 feet and visibility Cat B 1/4 mile.

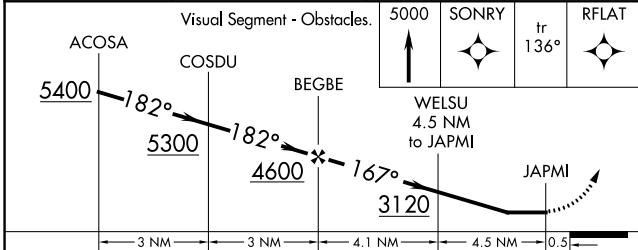
MISSED APPROACH: Climb to 5000 direct SONRY and on track 136° to RFLAT and hold, continue climb-in-hold to 5000.

AWOS-3 119.55	POTOMAC APP CON 132.85 323.125	UNICOM 122.7 (CTAF) 0
-------------------------	--	---------------------------------



NE-3, 08 SEP 2022 to 06 OCT 2022

NE-3, 08 SEP 2022 to 06 OCT 2022



ELEV 1165	TDZE 1165
-----------	-----------

MIRL Rwy 15-33

CATEGORY	A	B	C	D
LNVA MDA	2080-1¼	915 (1000-1¼)		NA
CIRCLING	2080-1¼	915 (1000-1¼)		NA